

# KISSsoft 03/2016 – Tutorial 1

## Test version and first steps

**KISSsoft AG**

Rosengartenstrasse 4  
8608 Bubikon  
Switzerland

Phone: +41 55 254 20 50

Fax: +41 55 254 20 51

info@KISSsoft.AG

www.KISSsoft.AG

# Table of Contents

1	Installation .....	3
1.1	Basic data .....	3
1.2	Installation .....	3
1.3	Activating the test version.....	3
1.3.1	Case 1: Activate online with a license code .....	3
1.3.2	Case 2: Activate with an activation code .....	4
2	Starting KISSsoft.....	5
2.1	Starting the software.....	5
2.2	Starting a calculation module .....	5
2.3	Starting an example calculation.....	6
3	How to use KISSsoft .....	7
3.1	Buttons .....	7
3.2	Help .....	7
3.3	Tutorials.....	8
4	Further information.....	10
4.1	Activating/deactivating individual modules .....	10

# 1 Installation

## 1.1 Basic data

There is no time limit on how long you can use the KISSsoft demo version. However, you cannot use it to store data, select data from lists etc. Some of the parameters involved in the shaft calculation and cylindrical gear calculation processes have also been restricted. Despite this, the demo version gives a really good first impression of the "look and feel" of the software. However, it cannot be activated and you should not attempt to import any software patches to it.

The test version also starts in demo mode. To ensure you can use all its functions, you must first activate it as described in the "Activating the test version" section. You can then use the full range of functions for 30 days. This gives you time to evaluate the software in detail. All the functions and calculation modules are available. After 30 days, the test version goes back into demo mode.

If you have any questions, just contact the KISSsoft Hotline team on +41 55 254 20 53 or at info@KISSsoft.AG. They will be happy to help. You will also find information about the program and how to use it at www.KISSsoft.AG.

## 1.2 Installation

You can install KISSsoft either from a CD-ROM or as a download. You will find the demo version in the downloads area of our website. To request a test version, simply fill out the contact form in the downloads area.

To install the software from CD, place the CD-ROM in your PC's CD drive and follow the instructions. If the installation program does not start automatically, run the setup.exe program which you will find in the root directory on the CD.

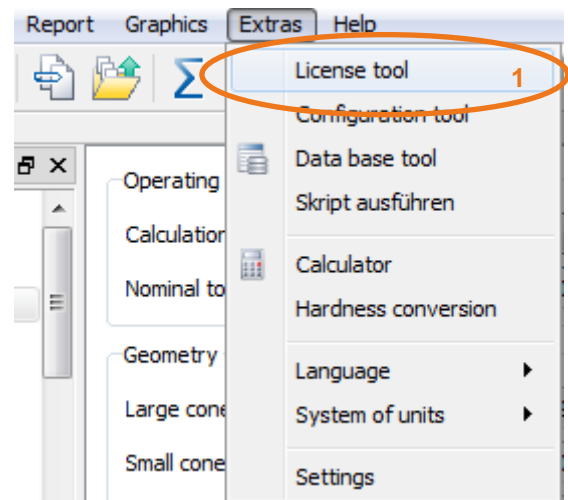
## 1.3 Activating the test version

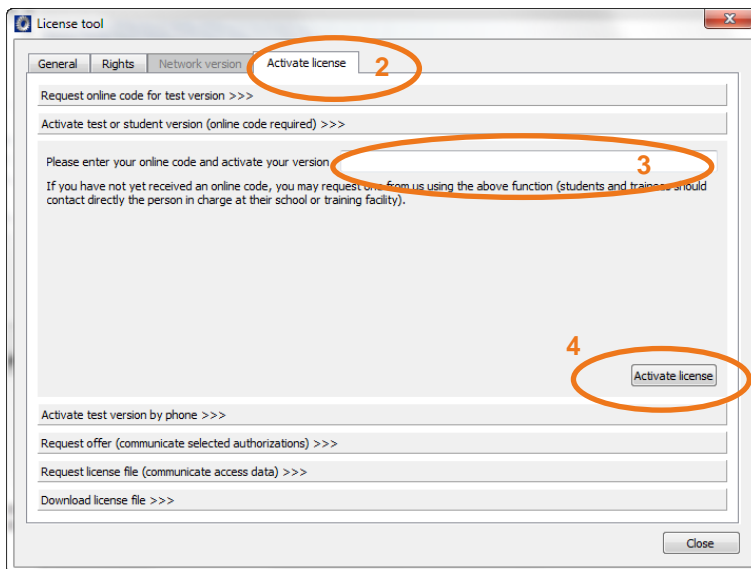
You must activate the software before you can run it in test mode. If you have already received an online code from us, follow the steps described in case 1 below. If you cannot perform an online activation (for example, if your firewall prevents this), you can also activate the software as described in case 2. Before you do this, please give us a quick call. Fill out the contact form on our website and we can then send you an online code by email.

### 1.3.1 Case 1: Activate online with a license code

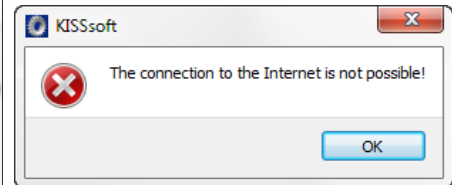
You will receive the online code together with a link to the installation program. Simply import, and then start this installation program. Follow the on-screen instructions to install KISSsoft.

After you have successfully installed the program, start KISSsoft as described in section 2.1 and click on "Extras" -> "License tool".





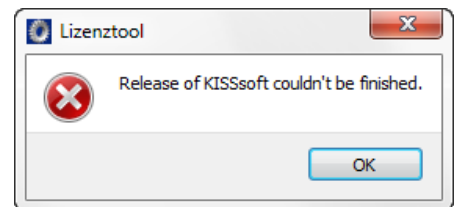
Enter the online code we sent you in the "**Online code**" field (nine capital letters). Then click on "**Activate license**" to set up a connection to the Internet so that KISSsoft can download the test license from the license server. If any problems occur at this stage, this message appears:



In this case, please contact our Hotline team (by email or telephone)

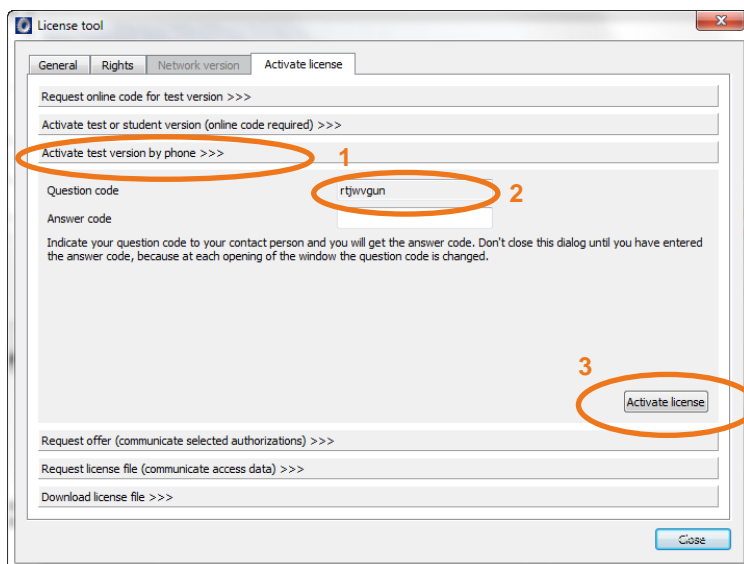
(info@KISSsoft.AG or +41 55 254 20 53), so they can give you a release code (case 2).

If you have entered the license code incorrectly, or if a different error occurs, you see this message. This also means you should get in contact with us.

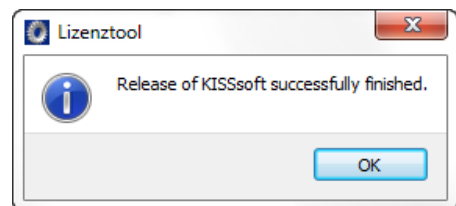


### 1.3.2 Case 2: Activate with an activation code

If the online activation did not work, you can activate the test version by telephone instead. In this situation, first start KISSsoft. Then call License management as described on page 2. Here you will see a Question code (eight character code).



Then call us on +41 55 254 20 53 and tell us this code. We will then give you the Answer code (eight character code), which you enter, and then click the "Activate license" button. If this is successful, you see this message.



## 2 Starting KISSsoft

### 2.1 Starting the software

You can call KISSsoft as soon as the software has been installed and activated. Usually you start the program by clicking "Start→Program Files→KISSsoft 03-2016→KISSsoft 03-2016". This opens the following KISSsoft user interface:

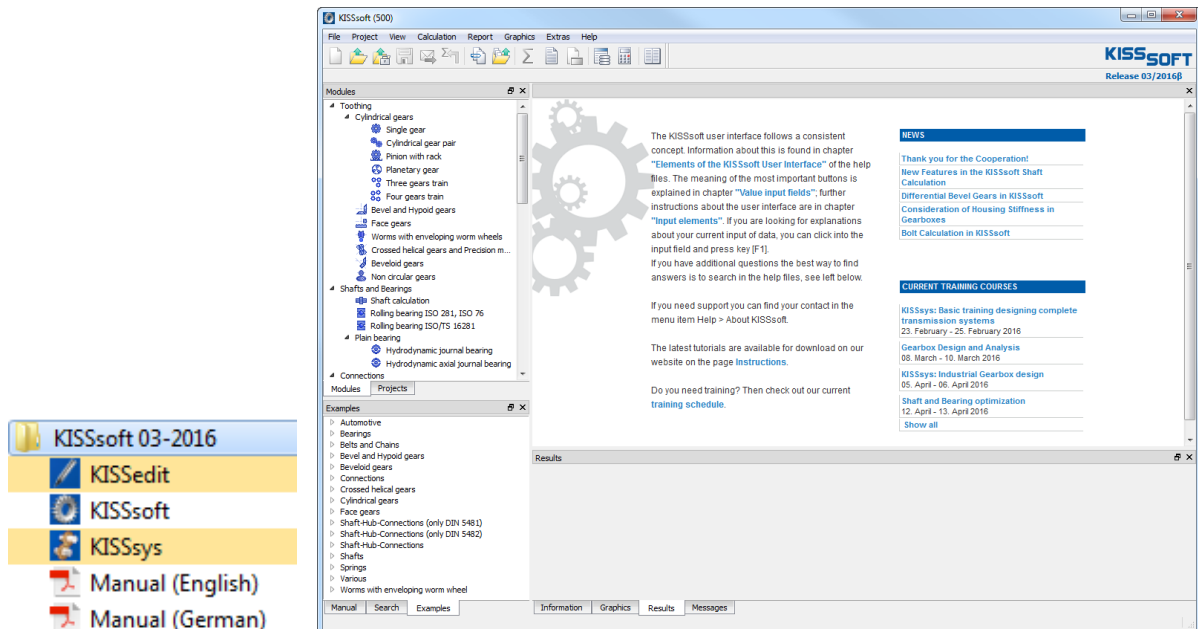


Figure 1. Starting KISSsoft, initial window

### 2.2 Starting a calculation module

Select the module tree window in the "Modules" tab to call individual calculation modules. Here, a cylindrical interference fit is shown as an example:

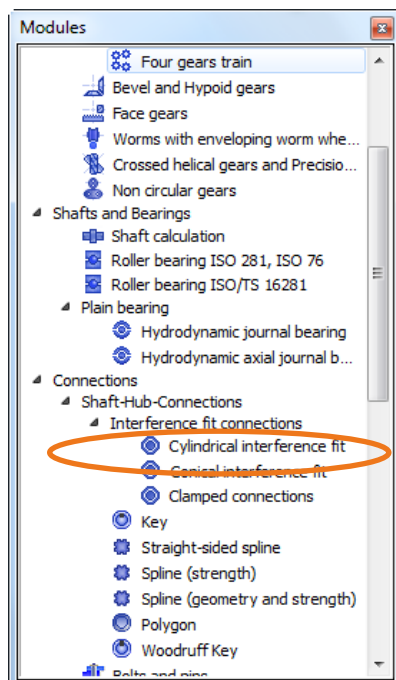


Figure 2. Double-click to select cylindrical interference fit

## 2.3 Starting an example calculation

You can display a number of examples in the help index window in the “**Examples**” tab.

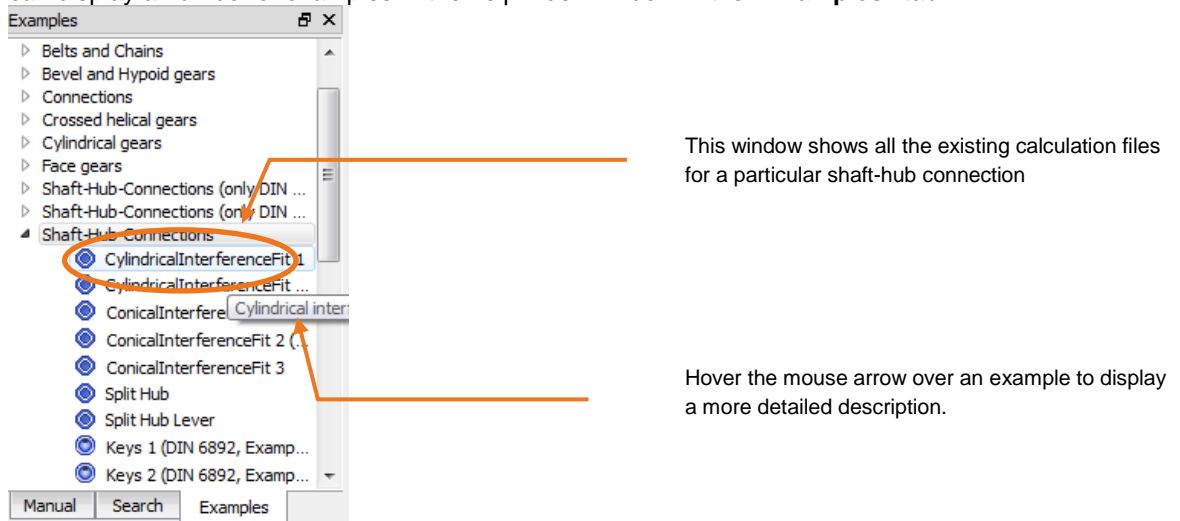








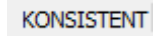


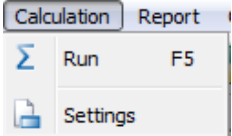

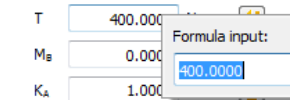
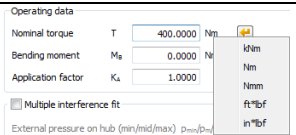
Figure 3. Selecting an example calculation

One or more example calculations are stored for each calculation module. Simply double-click on the one you want to open.

## 3 How to use KISSsoft


### 3.1 Buttons

You will find the following buttons in every calculation module:

Button	Name	Function
	Sizing button	This button indicates that KISSsoft has a suggestion for the value you need to input. If you click the Sizing button, the value already present in the input field is overwritten.
	Plus button	This button indicates either that additional information is available for the input field directly next to the button or that you can input more information in that field.
	Info button	Click this button to call an explanatory graphic.
	Convert button	Calculates the value using conversion formulae.
 "F5"	Calculate	Performs the calculation.
 "F6"	Write report	Generates a calculation report.
	Results consistent	This shows that the data you input matches the displayed results. If you change the input values, you see "INCONSISTENT" until you run the calculation again.
	Calculator	Starts the Windows calculator.
 or 	Module-specific settings	Allows you to input constraints/parameters for the calculation.
	Back to input	Click this button to return to the input window, for example, from report view.
	Mouse right-click	Press the right-hand mouse button (if the cursor is positioned in an input field) to start a simple formula editor.
	Mouse right-click	Press the right-hand mouse button (if the cursor is positioned on the unit) to convert the unit.

### 3.2 Help

You can call help and get instructions about the KISSsoft system in a number of ways:

- In tutorials, which describe how to use the program step by step, and which are installed from CD. See below for details.
- Although these tutorials are not available if you download the program, you will find them on our website and can download them from there.
- From the "Help/Index" menu which displays a selection of topics for which further information is available.
- If you need information about a particular input field, simply click on it and then press "F1" to display the corresponding place in the manual.
- Explanatory graphics have also been provided for some entries. To call these, just click the  (help graphic) button.

If you still have questions, call the KISSsoft Hotline team on +41 55 254 20 53 and they will be happy to help.

### 3.3 Tutorials

You can also access a number of other tutorials directly from the software:

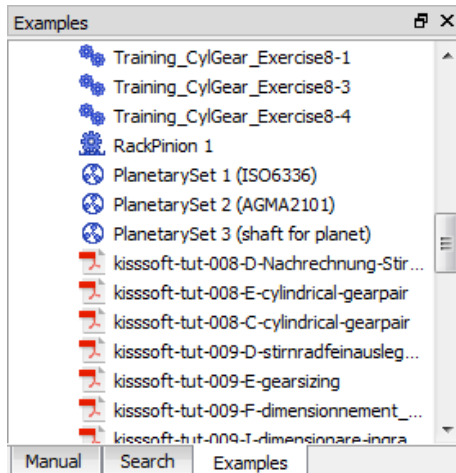


Figure 4. Starting KISSsoft tutorials in the help index window in the "Examples" tab



kisssoft-tut-001-E-install-first-steps.pdf	Installing as demo or test version, general information about KISSsoft
kisssoft-tut-002-E-interferencefit.pdf	Calculating a cylindrical interference fit
kisssoft-tut-003-E-key.pdf	Analyzing a key
kisssoft-tut-004-E-bolts.pdf	Selecting and verifying bolts
kisssoft-tut-005-E-shaftanalysis.pdf	Calculating shafts and bearings
kisssoft-tut-006-E-shaft-editor.pdf	Modeling shafts
kisssoft-tut-007-E-bearings.pdf	Calculating and sizing roller bearings
kisssoft-tut-008-E-CylindricalGearPair.pdf	Verifying cylindrical gear pairs
kisssoft-tut-009-E-gearsizing.pdf	Sizing and optimizing a cylindrical gear pair
kisssoft-tut-010-E-gearlifetime.pdf	Service life calculation of cylindrical gears using a spectrum (Miner rule)
kisssoft-tut-011-E-toothform.pdf	Tooth form optimization/modification, plastic gears
kisssoft-tut-012-E-sizing-of-planetary-gear-set.pdf	Tooth form modification, planetary gears
kisssoft-tut-013-E-root-optimization.pdf	Extended tooth form modification
kisssoft-tut-014-E-compression-springs.pdf	Spring calculation
kisssoft-tut-015-E-bevelgear.pdf	Calculating bevel gear meshing
kisssoft-tut-016-E-wormgear.pdf	Calculating worms with enveloping worm wheels

If you are using the KISSsoft download version, you will find all the tutorials on our website:  
Downloads→Tutorials→KISSsoft.  
Special instructions and information are available on request directly from KISSsoft.

## 4 Further information

### 4.1 Activating/deactivating individual modules

KISSsoft software is subdivided into a range of different calculation modules.

KISSsoft can therefore provide you with a quotation for the modules you require. Please contact us to discuss your requirements. We can then define exactly which modules you need and put together the optimum package for your applications.

By activating and deactivating permissions for individual modules in KISSsoft you can then run tests to see whether the suggested combination of modules is right for you. You can easily find out whether a particular calculation module is the one you need for your application.

Follow the steps described below to activate/deactivate individual modules:

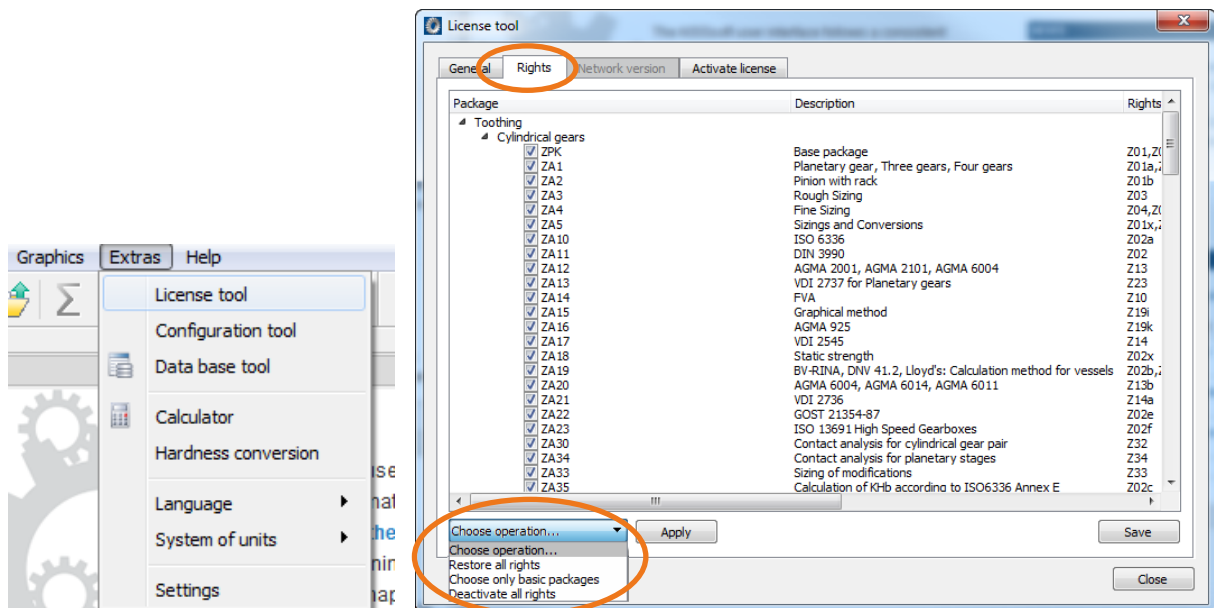


Figure 5. Call the authorization setting, activate the basic packages, restore, activate the expert modules

Under the "General" tab you will find information about the license.

You can activate specific expert modules in each individual entry.

Click "Restore all rights" to reactivate all the authorizations and run KISSsoft again as a "full version".