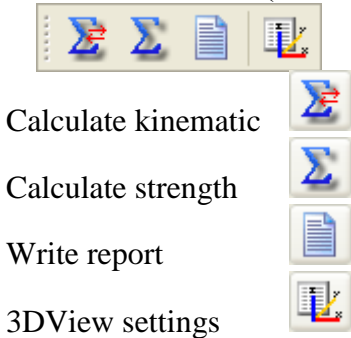


New functionalities in KISSsys interface

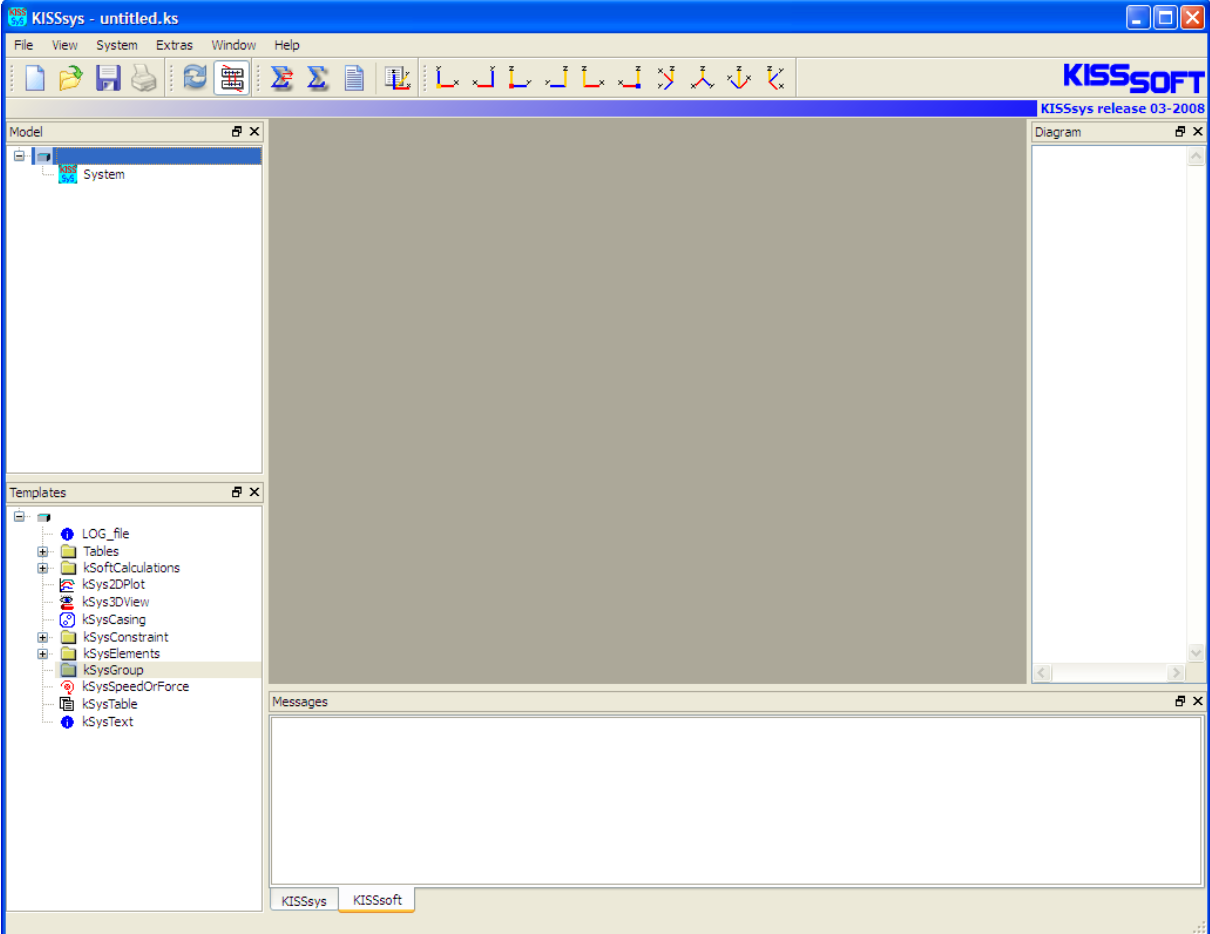
Standard calculations can be operated from menu bar (functions under “System”)



Rotate 3DView to the desired direction



Use “Drag-and-Drop” to copy things from the templates



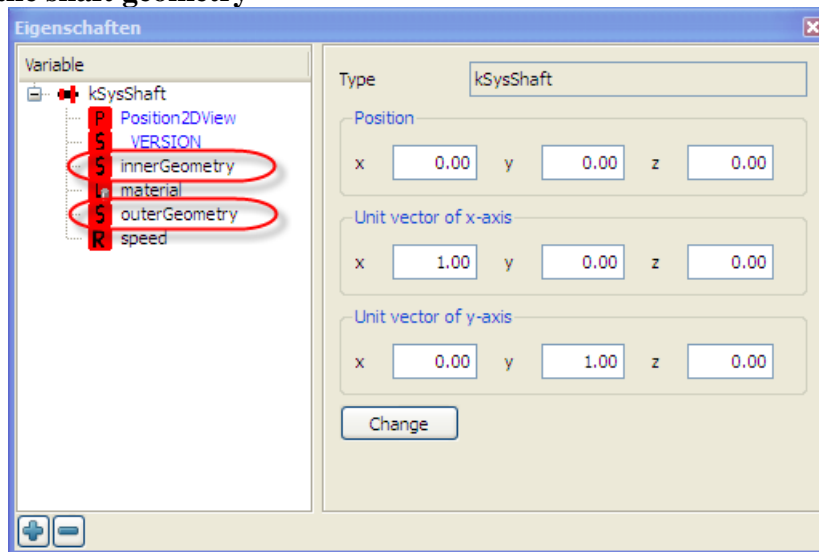
Changes from 04/2006 to 03/2008

Automatic Update

Automatic update is included in KISSsys functionality to change needful variables, parameters and expressions automatically when old KISSsys model created with previous versions is opened first time with new KISSsys version. This automatic update takes in the account all the necessary things which have been defined as a standard (values which are coming directly from template and class definitions). In case if user has made some modifications or used these changed things in own functionalities or in other variables these are not automatically updated and user needs to do this manually.

Automatic update is made only once after first load and when file is saved these updates are saved as well.

Definition of the shaft geometry



Geometry definition for the shafts is changed from variable “geometry” which included both inner and outer geometry to two separate variables “outerGeometry” and “innerGeometry”. All the default functions and expressions pointing to “geometry” in the version 04/2006 are changed to pointing to the “outerGeometry” when updated. If user has used this variable in own functions or expressions are added to any of the variables using variable “geometry” in the expression this need to be manually updated. E.g. expression `kSoft_RotCADDiameter(^.OBJ_GetMember("geometry"),position)` need to be updated to `kSoft_RotCADDiameter(^.OBJ_GetMember("outerGeometry"),position)`, this is indicated by kSys message (“Wrong Parameters in kSoft_RotCADDiameter”)

Defined conditions for the shaft ends

KISSsoft/Hirware-Modul: Shaft, Axes, Beams (W1)

File Project Calculations Report Settings Help

Main-Input data

Drawing number: 0.000.0

Short description:

Position of shaft axis in space: Horizontal

Angle / Vector: 0

Speed: 1500 1/min

Sense of rotation: Clockwise

Quality of balancing: G 6.3

Material: C45 (1), Heat treatable steel, unalloyed, through hardened (700/490 N/mm2)

Shaft end (Left / Right): fixed

Graphical shaft input

Calculate F5 Write Report F6 Results are consistent

Result-Overview

Shaft weight: kg Axial force: N

Second moment: kgm2

static torsion: *

Project: User: Example-User (example)

Elements-editor

Position: y 0.0000 mm

Type of bearing: Fixed

Enter stiffness:

Displacement in X-direction:

Displacement in Y-direction:

Displacement in Z-direction:

Rotation around X-axis: fixed

Rotation around Y-axis: fixed

Rotation around Z-axis: fixed

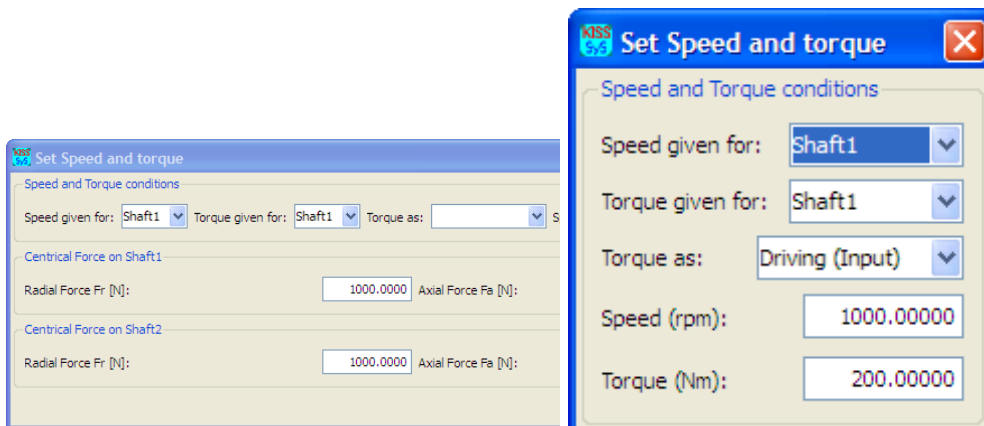
In the version 04/2008 it was possible to set conditions how the shafts ends are supported directly (e.g. in case of planetary shafts with only one bearing) in the shaft module. This is no more possible in new version and therefore in cases like this user need to define new element for the shaft "kSysBearing" to create the same support effect. This is not made automatically because it requires new element in a tree structure and the name for the element need to be defined. Therefore user need to add the element manually, and use function "UpdateShaftElements" from tree under shaft calculation to take this in the account. Then type of the element can be set correctly (e.g. "Fixed") in a shaft editor.

Bearing stiffness units

The definition of the stiffness unit has been changed from 10^6 N/m to N/mm and values defined in shaft editor were multiplied by 1000000 in KISSsys, therefore if formulas are used in new version correct stiffness values need to be checked.

Dialogs

A correction for the dialog settings has been made, which may in some cases result to a “funny” looking dialog fields defined by the user. This is because Horizontal and Vertical definition of the grouped fields. E.g. left side picture should in reality look like right side picture:



This can be correct changing the definition of the fields from;

```
...CADH_VarDialog(["Name",200,200,0.4,1],  
                  [C:VDLG_Horz...
```

To;

```
...CADH_VarDialog(["Name",200,200,0.4,1],  
                  [C:VDLG_Vert...
```

Support bearings

Definition of the „kSysBearing“ (general support) is changed in the new version. In the new version it is possible to define also e.g. clearance additional of only deflection and stiffness. Needful values are automatically created, but user may need to check the formulas in some cases. If clearance values are added (e.g. “clearanceLX” and “clearanceRX”) they will overwrite values defined in “ux”.