

# CATIA-interface for KISSsoft

... creating a gear wheel calculated in KISSsoft fast and simple in CATIA V5

## KISSsoft

The company KISSsoft AG develops calculation programmes in most different areas. The product KISSsoft is a programme for the checking, interpretation and optimization of machine elements.

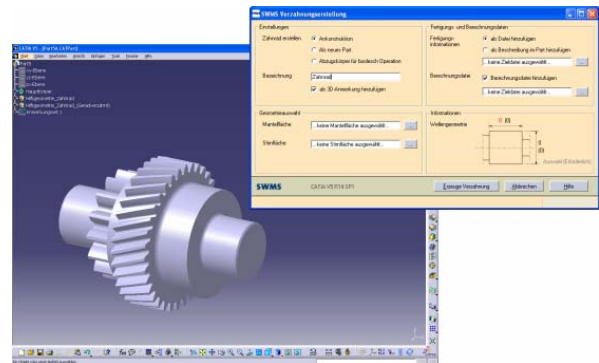
For the module for the calculation of gear wheels an interface is developed into CATIA V5 by the company SWMS systems engineering. By this interface it is possible to produce the gear wheels calculated in KISSsoft, directly in CATIA V5. The time expensive construction of the gear wheels or the fault-prone manually transferring of the numerous parameters in corresponding programmes of third party suppliers are therefore not necessary anymore.

## Types of gear wheels

The following types of gear wheel are supported by the interface.

- Internal / external Spur Gears
- Internal / external Helical Gears
- Crossed Axes Helical Gears
- Worm Gears
- Bevel Spur Gears

## The interface



The construction of the gear wheels can be carried out on different ways. A gear wheel can be produced at an existing construction. It is possible to create a gear wheel in a new part. In addition, the production of a negative body is possible for Boolean operations. The KISSsoft calculation file and the manufacturing information needed for the drawing derivation can be appended by the interface to the CATIA part. This function makes sure, that you can go back to all necessary information from the creation of the gear wheel up to the manufacturing.

### Kontakt

SWMS Systemtechnik  
Ingenieurgesellschaft mbH  
Donnerschweer Straße 4a  
D-26123 Oldenburg

Telefon: +49 441 960 21-0  
Telefax: +49 441 960 21-21  
Mail: info@swms.de  
Internet: www.swms.de