

KISSsoft AG - +41 55 254 20 50
Uetzikon 4 - +41 55 254 20 51
8634 Hombrechtikon - info@KISSsoft.AG
Switzerland - www.KISSsoft.AG

KISSsoft Tutorial 001: Testversion and first steps

1 Installation

1.1 Basics

The KISSsoft demo-version can be used without any time-limit. Functions like saving and selecting data from lists etc. are not available.

The test-version has to be activated, as shown in 1.3, and works with its full extend for 30 days. During this time, you have the possibility to intensively evaluate the program. All functions and calculation modules are available.

If you have any questions, the KISSsoft Hotline team at +41-55-254-20-53 or info@KISSsoft.AG will be happy to help. You can also access information about the program and how to use it on www.KISSsoft.AG.

1.2 Installation

KISSsoft is available via download or from CD-ROM. To get the download version, please visit our homepage and access the download section. There are multiple program options to choose from the download-box. You can find the explanations at the end of the internet-page.

CURRENT DEMO VERSION

download release	size (MB)
08/2009xs	65
08/2009s	115
08/2009m	160
08/2009	240

Explanation of the Release
column: See below.

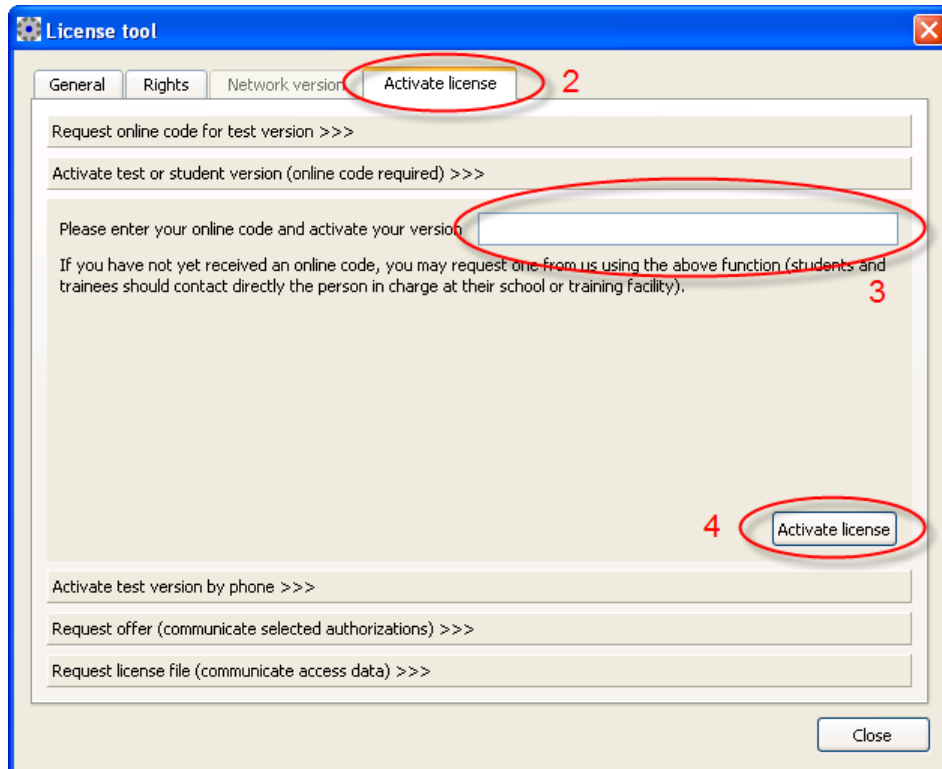
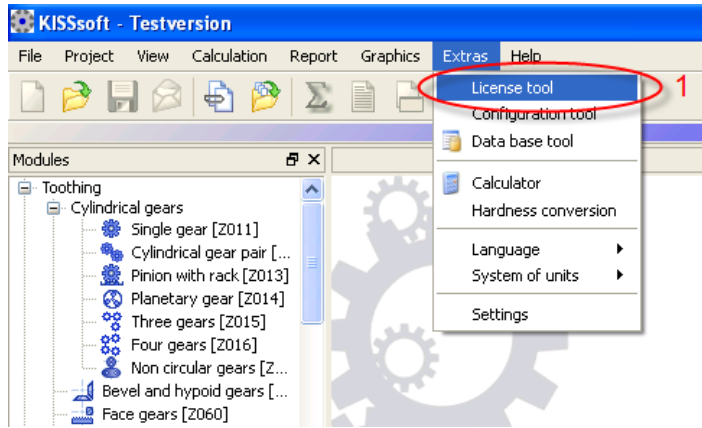
To start the installation from CD, place the CD-ROM in the disk drive of your PC and follow the installation instructions. If the installation program does not start automatically, run the setup.exe program in the CD root directory.

1.3 Activating the test-version

In order to remove all demo restrictions, an activation is necessary. Did you already receive an online activation code from KISSsoft, then please continue with "Case 1". If online activation is not possible (e.g. because of restrictive firewall) you can release according to "Case 2". In order to do so, please give us a short call. To receive an online-code, please complete the contact form on our website.

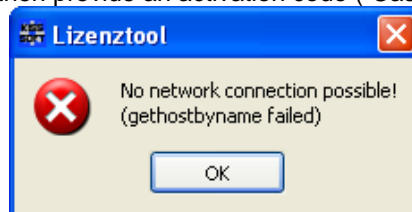
1.3.1 Case 1: Online Activation with License Code

After you have performed the installation, start KISSsoft and click the "Extras" → "License tool" menu.

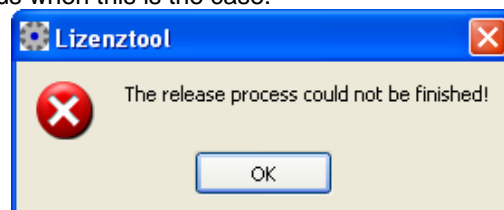
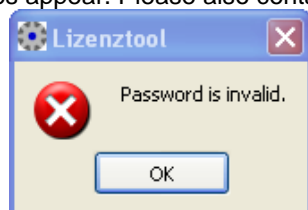


In the "**License code**" field, enter the license code supplied with the test installation (nine capital letters). Then click on "**Activate license**" to set up an Internet connection. KISSsoft then fetches the test licence from the licence server. If any problems occur during this process, the following message will appear.

("In this case, please contact our Hotline team (info@KISSsoft.AG or +41-55-254-20-53) who will then provide an activation code ("Case 2")").



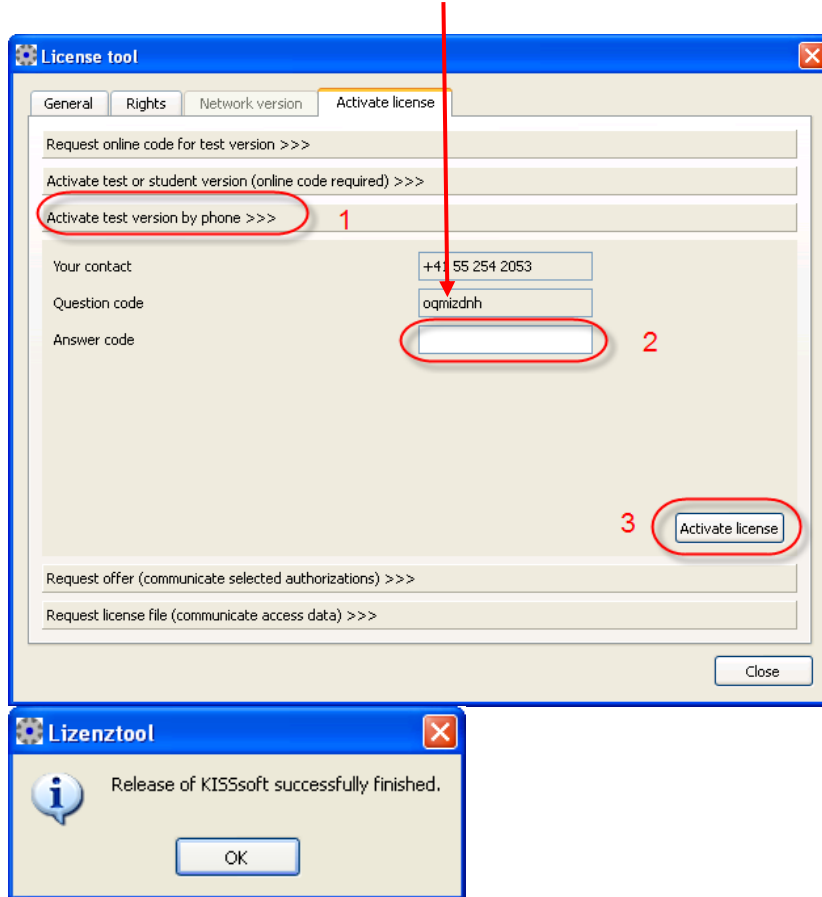
If you entered the license code incorrectly, or if another problem occurs, the following messages appear. Please also contact us when this is the case.



1.3.2 Case 2: Activation with release code

Alternatively, if online activation did not work, the test-version can be activated via phone. Doing so, you have to start KISSsoft. Then access the license tool as describe on the last page.

You will find a "Question code" (eight character code).



Please give us a call (+41 55 254 20 53) and submit the code. You will receive the "Answer code" to activate the test-license right away.

2 Starting KISSsoft

2.1 Starting the software

After installation and release process are finished you can call the KISSsoft program. To run the program, go to "Start→Program Files→KISSsoft 08-2009→KISSsoft". This opens the KISSsoft user interface:

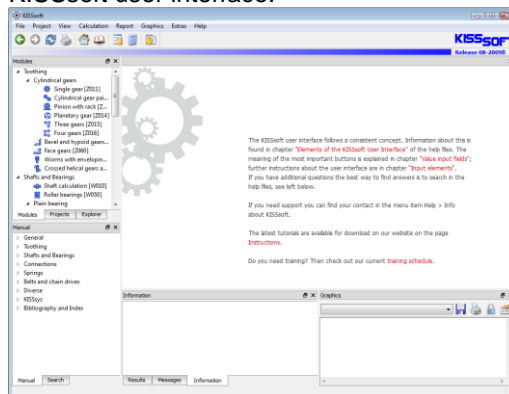


Figure 2.1 Starting KISSsoft, initial window

2.2 Starting a calculation module

Select the module tree window in the "**Modules**" tab to call individual calculation modules. The example of a cylindrical interference fit is shown here:

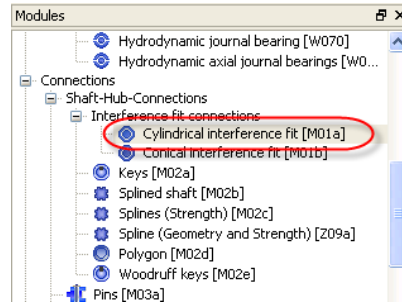
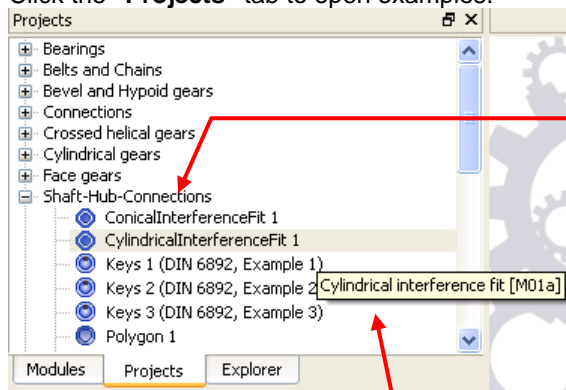


Figure 2.2 Double-clicking to select a cylindrical interference fit

2.3 Starting an example calculation

Click the "**Projects**" tab to open examples.



All interference fit calculation files are displayed

Hover the mouse pointer over a particular example to display a detailed description of the example.





Figure 2.3 Selecting an example calculation




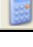


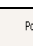
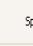
One or more example calculations are stored for each calculation module. Simply double-click on the one you want to open.

3 How to use KISSsoft

3.1 Buttons


3.2 The following elements appear in every calculation module:

Button	Name	Function
	Sizing button	This button tells you that KISSsoft has a suggestion for the value you should input. If you press the Sizing button, the value already present in the input field is overwritten. One of the strengths of the KISSsoft system is that you can try out as many values here as you want.
	Plus button	This button tells you that additional information is available for the input field directly next to the button. You can also use other methods of inputting data here. One of the strengths of the KISSsoft system is that you can try out as many values here as you want.
	Info button	Click this button to call a graphic with further details about the values you need to input here.
	Convert button	Calculates the value using conversion formulae.

	"F5"	Calculate	Performs the calculation.
	"F6"	Write report	Generates a calculation report.
	CONSISTENT	Results consistent	This shows that the values you input match the displayed results. If you change the input values, you see "INCONSISTENT" until you run the calculation again.
		Calculator	Starts the Windows calculator
 or 		Module-specific settings	Allows you to input constraints / parameters for the calculation
		Back to input	Click this button to return to the input window, for example, from report view.
		Right-hand mouse button	Press the right-hand mouse button (if the cursor is positioned in an input field) to start a simple formula editor

3.3 Help

You can display help and get instructions about the KISSsoft system in a number of ways:

- 1) Read Tutorials, which show you step-by-step how to use the program. These are installed along with the software, see next section 3.4.
They are not available in the download version but can be found on our homepage.
- 2) Click the "Help/Index" menu to open a list of topics for which further information is present.
- 3) If you require information about a particular input field, simply click on it and then press "F1" to open the manual in the appropriate place.
- 4) Some inputs have descriptive graphics, which you call display by clicking  (help graphic)
- 5) If you have any questions, the KISSsoft Hotline team +41 55 254 20 53 is happy to help.

3.4 Tutorials

The tutorials listed below are available in addition to the getting started with KISSsoft tutorial.

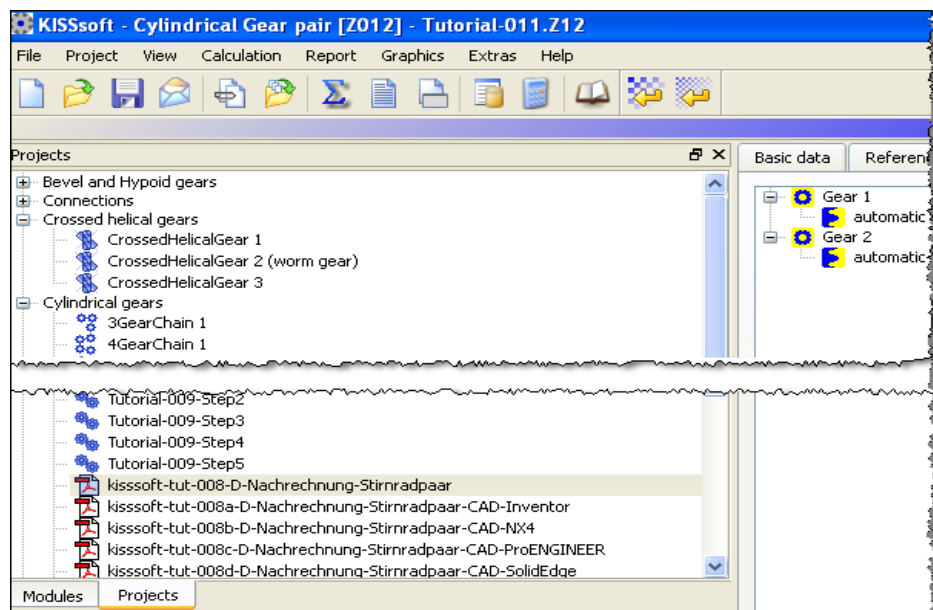


Figure 3.1 Starting tutorials in KISSsoft from the module tree window in the "Projects" tab

kisssoft-tut-001-E-install-first-steps.pdf	Installation as demo or test version, general information about KISSsoft
kisssoft-tut-002-E-interferencefit.pdf	Calculates a cylindrical interference fit
kisssoft-tut-003-E-key.pdf	Calculates a key
kisssoft-tut-004-E-bolts.pdf	Selects and verifies bolts
kisssoft-tut-005-E-shaftanalysis.pdf	Calculates shafts and bearings
kisssoft-tut-006-E-shaft-editor.pdf	Models shafts
kisssoft-tut-007-E-bearings.pdf	Calculates and sizes roller bearings
kisssoft-tut-008-E-CylindricalGearPair.pdf	Verifies cylindrical gear pairs
kisssoft-tut-009-E-gearsizing.pdf	Sizes and optimizes a cylindrical gear pair
kisssoft-tut-010-E-gearlifetime.pdf	Service life calculation of cylindrical gears using Miner rule
kisssoft-tut-011-E-toothform.pdf	Tooth form optimization/modification, plastic gears
kisssoft-tut-012-E-sizing-of-planetary-gear-set.pdf	Tooth form modification, planetary gears
kisssoft-tut-013-E-root-optimization.pdf	Extended tooth form modification
kisssoft-tut-014-E-compression-springs.pdf	Spring calculation
kisssoft-tut-015-E-bevelgear.pdf	Calculation of bevel gear toothing
kisssoft-tut-016-E-wormgear.pdf	Calculation of worms with enveloping worm wheels

If you use the KISSsoft download version, you can find all tutorials on our homepage: Downloads→Tutorials→KISSsoft
Special instruction and information is also provided directly from KISSsoft on request.

4 Further Information

4.1 Activating/deactivating individual modules

The KISSsoft program consists of a number of different calculation modules. An offer for a fitting module configuration, according to your needs, can be supplied by us. Please contact our sales team in order to define the right package for your applications.

If you want to give the proposed package a test, it is possible to activate or deactivate the rights for single modules in KISSsoft. This is a great way to check if a specific calculation module will suit your needs.

You can activate or deactivate individual authorizations as shown below:

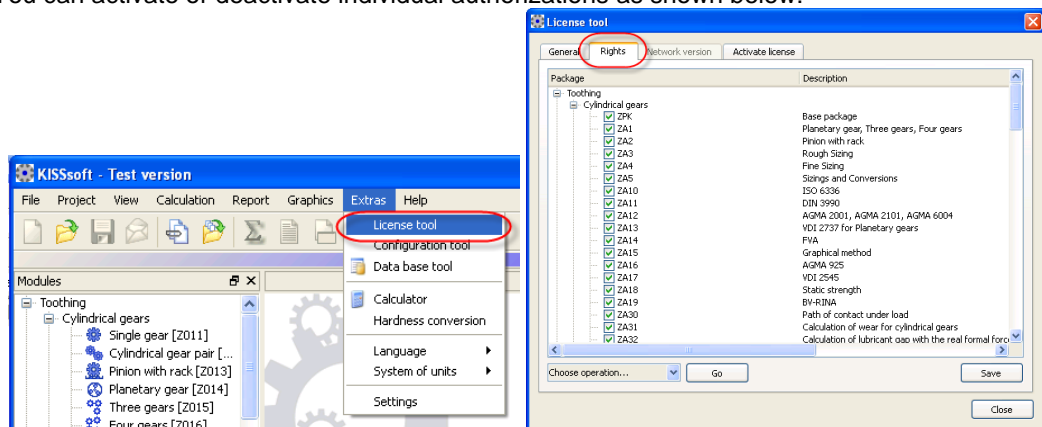
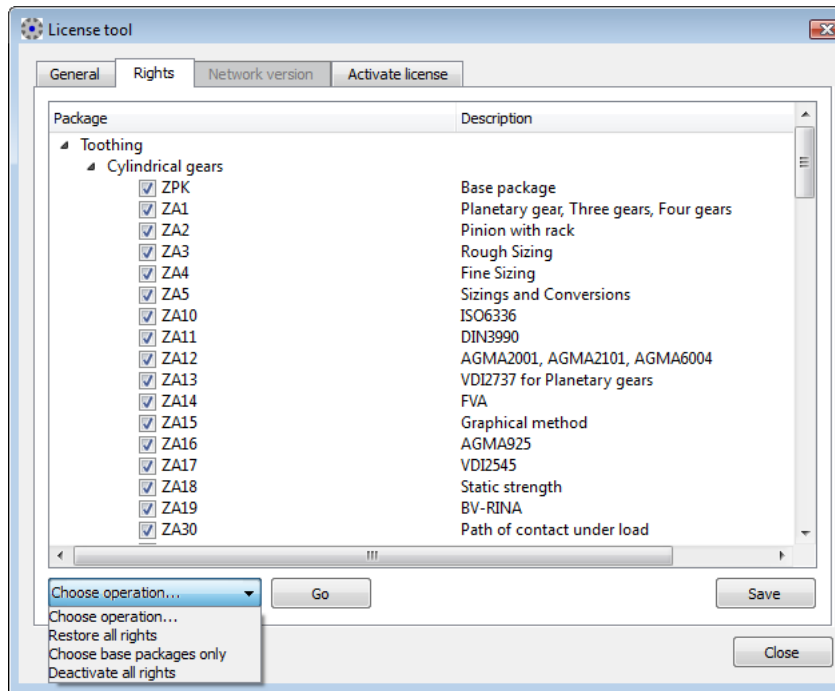


Figure 4.1 Calling the "License tool" program



Click "**General**" to view information about the license.

You can activate specific expert modules in each individual entry

Click "**Restore all rights**" to reactivate all the authorizations. This returns KISSsoft to "**Full version**"

Figure 4.2 Activating basic packages, reset, activating expert modules