

KISSsoft AG - +41 55 254 20 50
Uetzikon 4 - +41 55 254 20 51
8634 Hombrechtikon - info@KISSsoft.AG
Switzerland - www.KISSsoft.AG

KISSsoft Tutorial: Test Version and First Steps

1 Installation

1.1 Basic data

There is no time limit on how long you can use the KISSsoft demo version. However, you cannot use it to store data, select data from lists etc. In addition for the shaft and the cylindrical gear calculations some parameters are restricted. The demo version will give a good first impression of the "look and feel" of the software, however, you cannot activate it and you should not install patches.

The test version also starts in demo modus. To use it to its full functional extent you have to activate it as described in section "Activation of the Test Version". Then it will run for 30 days with all functions and calculation modules available. This gives you time to evaluate the software in detail. After the 30 days it will fall back to demo modus.

If you have any questions, the KISSsoft hotline team +41 55 254 20 53 will be happy to help, alternatively, go to info@KISSsoft.AG. You can also access information about the program and how to use it under www.KISSsoft.AG.

1.2 Installation

You can install KISSsoft either from a CD-ROM or as a download. For the demo version, go to our website and click in the Download area. Here you can also request a test version using the contact form.

To install the software from CD place the CD-ROM in your PC's disk drive and follow the instructions. If the installation program does not start automatically, run the setup.exe program in the CD root directory.

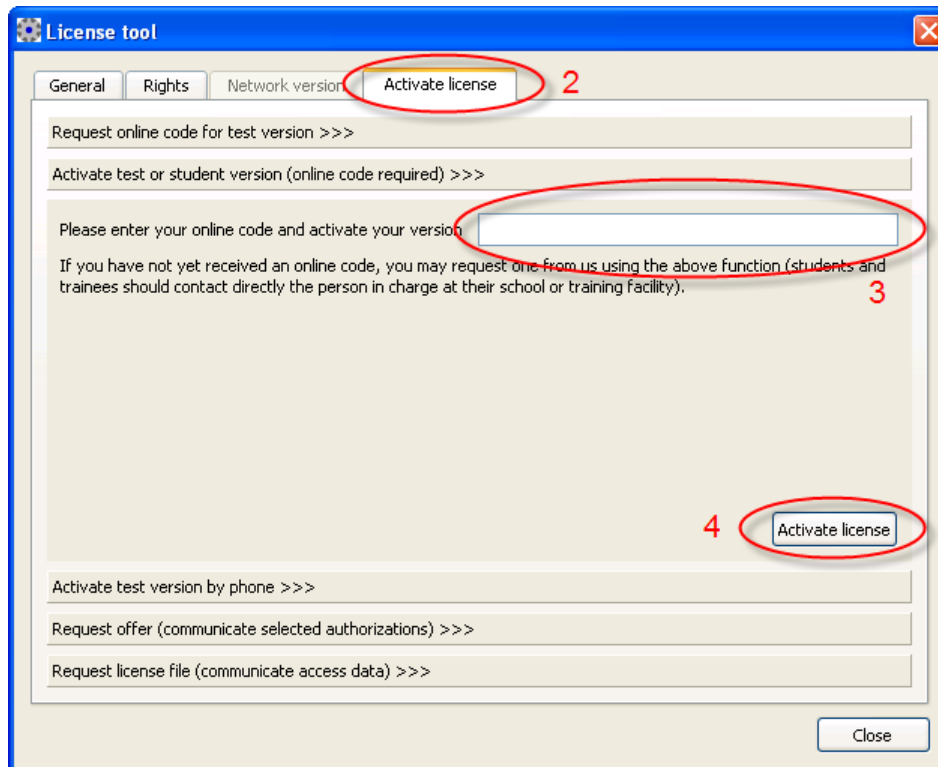
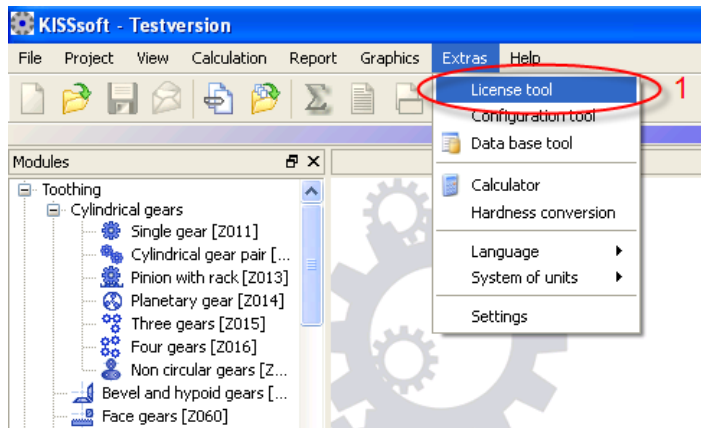
1.1 Activating the test version

The software must be activated before in order to activate the to test mode.

If you have already received an online code from us, simply continue as described in case 1. If an online activation is not possible (for example if a restrictive firewall is in place), you can also release the software as described in case 2. Before you do this, please give us a quick call. Fill out the contact form on our website and we can then send you an online code by email.

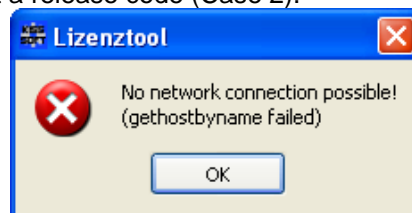
1.1.1 Case 1: Online Activation with License Code

Along with the online code you receive a link to the setup program. Download the setup program and start it. Follow the instructions on the screen to install KISSsoft. After installation, start KISSsoft and call the "Extras"-> "License tool" menu.

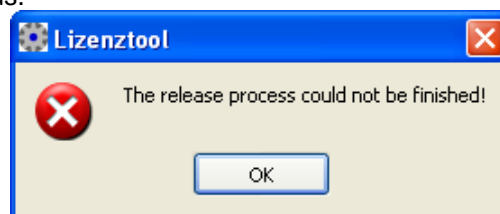
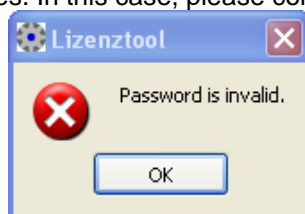


In the "**License code**" field, input the online code you received from us (nine capital letters). Then click "**Activate license**" to set up the connection to the internet so that KISSsoft can download the test license from the license server. If any problems occur at this stage, this message appears.

In this case please contact our Hotline (info@KISSsoft.AG or call +41 55 254 20 53), to get a release code (Case 2).

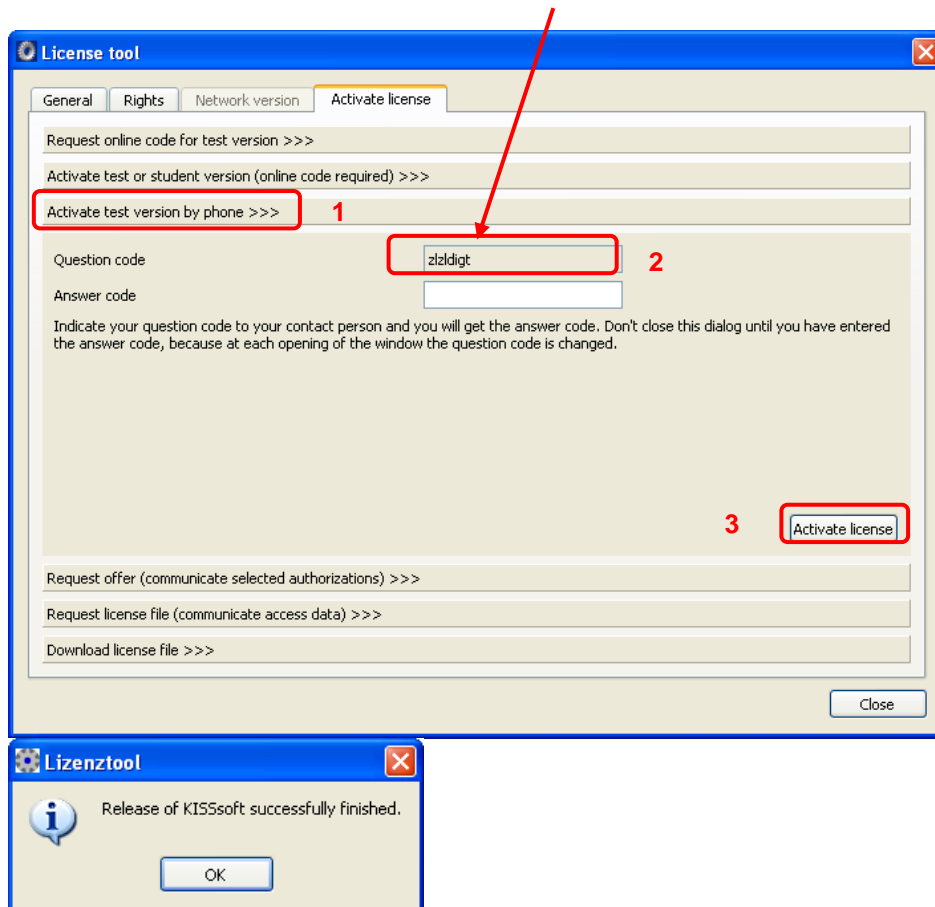


If you entered the license incorrectly, or if a different error occurs, you will see these messages. In this case, please contact us.



1.1.2 Case 2: Activation with Release Code

If the online release did not work, you can activate the test version by telephone instead. In this case, first start KISSsoft. Then call License management as described on page 2. Here you will see a Question code (eight character code).



Then call us on (+41 55 254 20 53) and tell us this code. We will then give you the Answer code (eight character code).

2 Starting KISSsoft

2.1 Starting the software

Once you have installed and activated KISSsoft either as a test or licensed version, follow these steps to call the KISSsoft system. Usually you start the program by clicking "Start→Program Files→KISSsoft 03-2011→KISSsoft". This opens the following KISSsoft user interface:

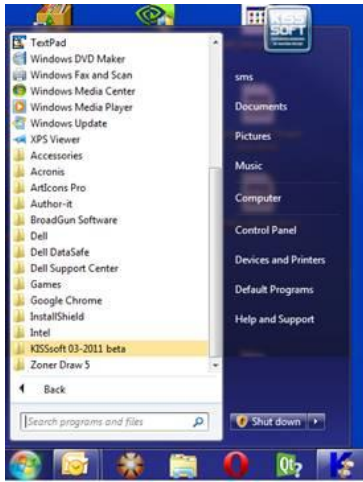
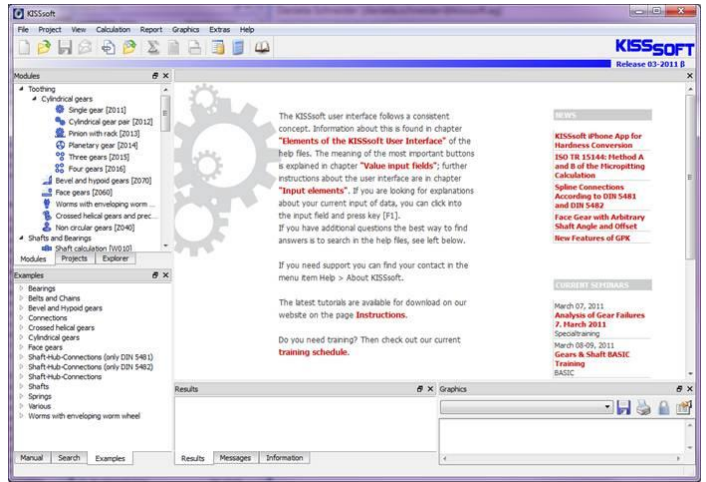


Figure 2.1 Starting KISSsoft, initial window



2.2 Starting a calculation module

You can call each individual calculation module from the module tree window in the "Module" tab. The example used here shows "Cylindrical interference fit" selected:

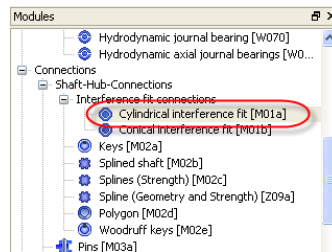
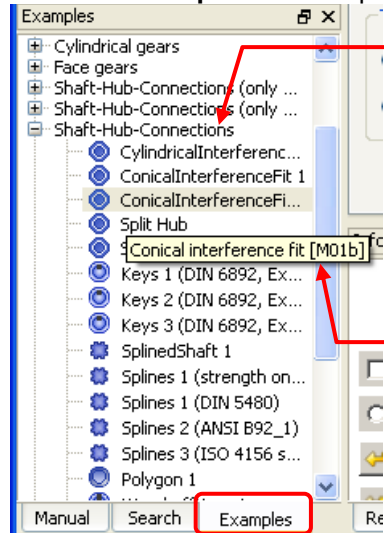


Figure 2.2 Double-clicking to select "Cylindrical interference fit"

2.3 Starting an example calculation

Click the "Examples" tab to open examples.



All interference fit calculation files are displayed

Hover the mouse pointer over a particular example to display a detailed description of the example.





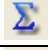
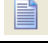
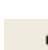

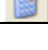
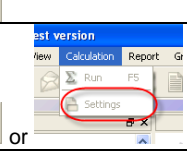


Figure 2.3 Selecting an example calculation

One or more example calculations are stored for each calculation module. Simply double-click on the one you want, to open it.

3 How to use KISSsoft


3.1 Buttons

You will find the following buttons in every calculation module:

Button	Name	Function
	Sizing button	This button indicates that KISSsoft has a suggestion for the value you need to input. If you click the Sizing button, the value already present in the input field is overwritten.
	Plus button	This button indicates either that additional information is available for the input field directly next to the button or that you can input more information in that field.
	Info button	Click this button to call an explanatory graphic.
	Convert button	Calculates the value using conversion formulae.
 "F5"	Calculate	Performs the calculation.
 "F6"	Write report	Generates a calculation report.
 CONSISTENT	Results consistent	This shows that the values you input match the displayed results. If you change these entries, the status "INCONSISTENT" is displayed until you rerun the calculation.
	Calculator	Starts the Windows calculator
 or 	Module-specific settings	Allows you to input constraints/parameters for the calculation
	Back to input	Click this button to return to the input window, for example, from the report view.
	Right-hand mouse button	Press the right-hand mouse button (if the cursor is positioned in an input field) to start a simple formula editor

3.2 Help

You can call help and get instructions about the KISSsoft system in a number of ways:

- 1) Tutorials, in which the program is described step by step. This is installed from CD along with the software, see below.
Although these tutorials are not available if you download the program, you will find them on our website and can download them from there.
- 2) Click the "Help/Index" menu to open a dialog where you can select the topic you want more information about.
- 3) If you require information about a particular input field, simply click on the field and press "F1" to open the corresponding point in the manual.
- 4) Some input fields also have explanatory graphics which you access by clicking the  button (help graphic).
- 5) If you still have questions, call the KISSsoft Hotline team on +41-55-254-20-53 and they will be happy to help.

3.3 Tutorials

You can access a number of other tutorials directly from the program, in addition to this tutorial about how to start using KISSsoft:

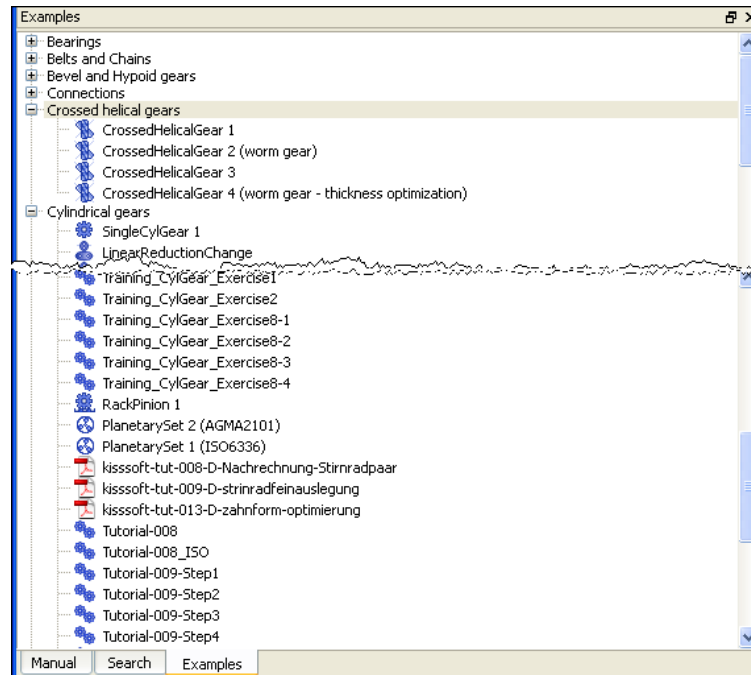


Figure 3-1 Starting tutorials in KISSsoft from the help index window in the "Example" tab

kisssoft-tut-001-E-install-first-steps.pdf	Installation as demo or test version, general information about KISSsoft
kisssoft-tut-002-E-interferencefit.pdf	Calculates a cylindrical interference fit
kisssoft-tut-003-E-key.pdf	Calculates a key
kisssoft-tut-004-E-bolts.pdf	Selects and verifies bolts
kisssoft-tut-005-E-shaftanalysis.pdf	Calculates shafts and bearings
kisssoft-tut-006-E-shaft-editor.pdf	Models shafts
kisssoft-tut-007-E-bearings.pdf	Calculates and sizes roller bearings
kisssoft-tut-008-E-CylindricalGearPair.pdf	Verifies cylindrical gear pairs
kisssoft-tut-009-E-gearsizing.pdf	Sizes and optimizes a cylindrical gear pair
kisssoft-tut-010-E-gearlifetime.pdf	Service life calculation of cylindrical gears using Miner rule
kisssoft-tut-011-E-toothform.pdf	Tooth form optimization/modification, plastic gears
kisssoft-tut-012-E-sizing-of-planetary-gear-set.pdf	Tooth form modification, planetary gears
kisssoft-tut-013-E-root-optimization.pdf	Extended tooth form modification
kisssoft-tut-014-E-compression-springs.pdf	Spring calculation
kisssoft-tut-015-E-bevelgear.pdf	Calculation of bevel gear toothing
kisssoft-tut-016-E-wormgear.pdf	Calculation of worms with enveloping worm wheels

If you are using the KISSsoft download version, you will find all the tutorials on the company website: Downloads→Instructions→KISSsoft.

Special instructions and information are available on request directly from KISSsoft.

4 Further information

4.1 Activating/deactivating individual modules

KISSsoft software is subdivided into an extensive range of different calculation modules. KISSsoft can therefore provide you with a quotation containing the modules you require. Please contact us to discuss your requirements. We can then define exactly which modules you need and put together the optimum package for your applications.

By activating and deactivating permissions for individual modules in KISSsoft you can then run tests to see whether the suggested combination of modules is right for you. You can easily find out whether a particular calculation module is the one you need for your application.

Follow the steps described below to activate/deactivate individual modules:

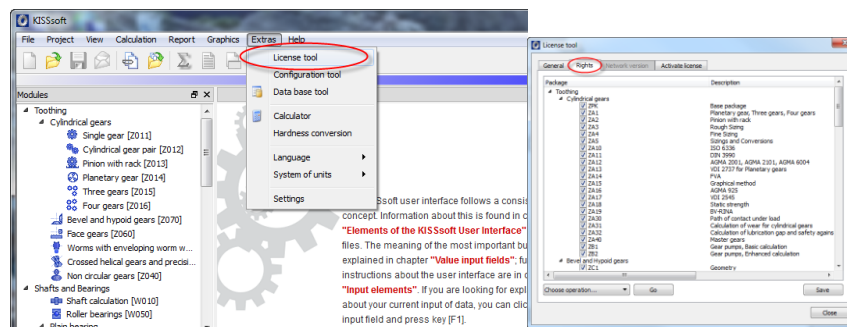
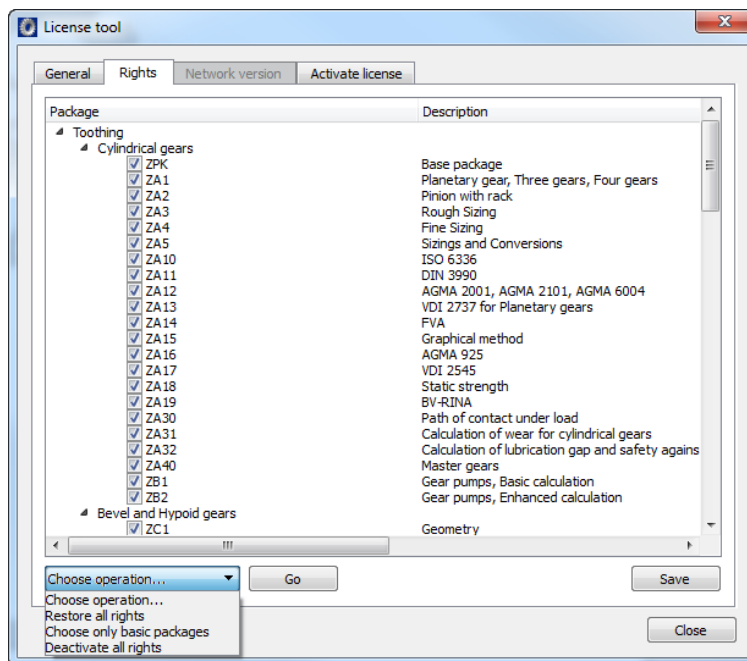


Figure4-1 Calling the authorization setting



Click on **"General"** to input the license information.

You can activate specific expert modules in each individual entry.

By clicking **"Restore all rights"** you can reactivate all the authorizations and run KISSsoft again as a **"Full version"**.

Figure4-2 Activating basic packages, resetting, activating expert modules