

KISSsoft AG - ☎ +41 55 254 20 50  
Uetzikon 4 - ☎ +41 55 254 20 51  
8634 Hombrechtikon - ✉ info@KISSsoft.AG  
Switzerland - www.KISSsoft.AG

## Installation of a KISSsoft Floating License Version 03-2011

### Introduction

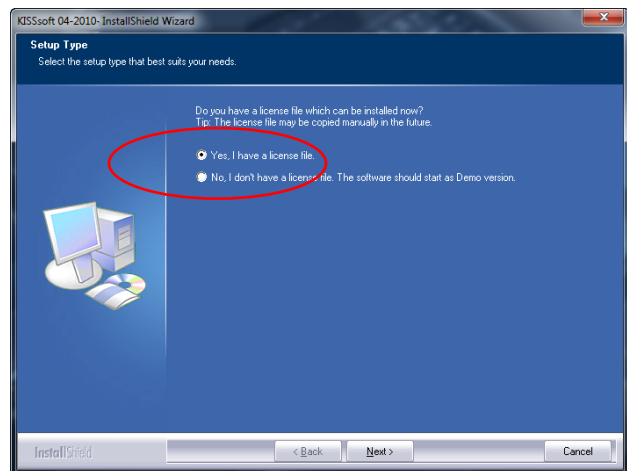
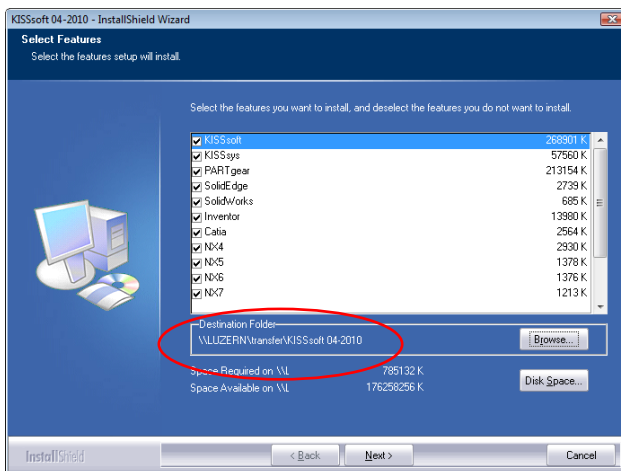
To install a KISSsoft floating license (network version) we recommend several steps. First you install the software. With this you can generate some information about your server we need, to create the correct license file. The final step is then to copy the license file into the right subfolder.



### Step 1, Basis Installation

Insert the CD utilizing the auto run feature or by executing Setup.exe in the root directory of the CD. Choose the desired language for the installation by clicking on the appropriate flag then click on **[INSTALLATION]**.

Install KISSsoft into a new (empty) directory which is **preferably placed on a server** (less maintenance effort), or on individual client machines. The directory name should include the name of the release (We recommend that you use the standard defaults of the installation program).



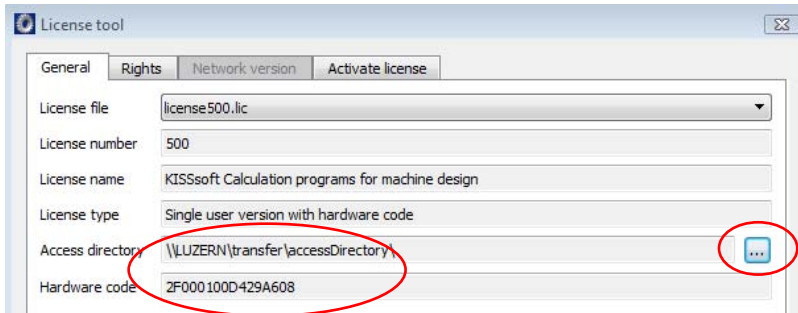
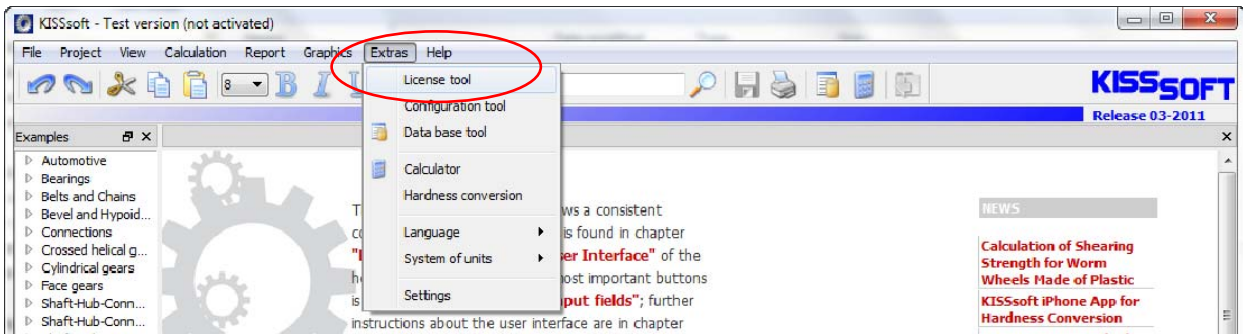
At the end of this installation the wizard will prompt you for a license file. **If you already executed Step 2** and already sent us the necessary Access directory and the Hardware code and a received license file from us in return, you can select this license file now. Otherwise simply click on [Next].

### Import Current Patches

At the end of the installation we recommend to load the latest patch. For this open the download page [www.KISSsoft.AG/patches.htm](http://www.KISSsoft.AG/patches.htm). There you can download the latest patch. By extracting the ZIP file (resp. starting the self extracting archive with extension \*.exe by double-clicking) to the installation folder some files will be overwritten to fix known issues. This marks the end of the basis installation.

### Step 2, Browsing to the Access directory and retrieving the Hardware code

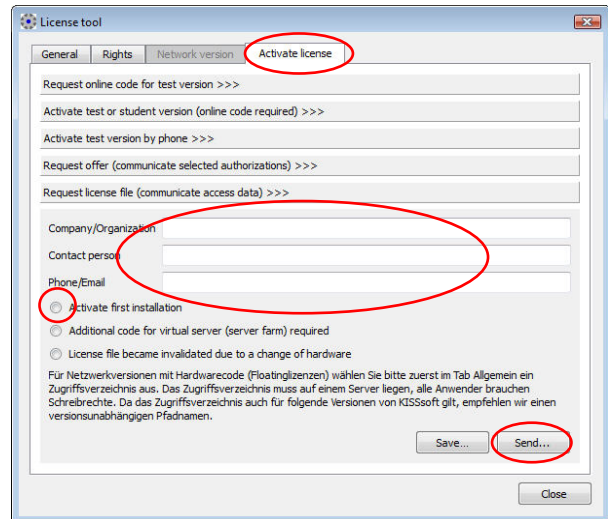
After successful installation of the software, start the program „KISSsoft” and open the menu item “Extras” then “License tool”. You can also use an installed test version of KISSsoft, if already available.



In the License tool in section **“General”** select the **Access directory**, by clicking on the browse button [...]. The Access directory is used for counting the concurrent accesses to KISSsoft, **it must be located on a server** which is seen from each client the same way and needs read, write and delete permissions. Please refer to the example on the right

(format e.g.: \\SERVER\Directory\ )

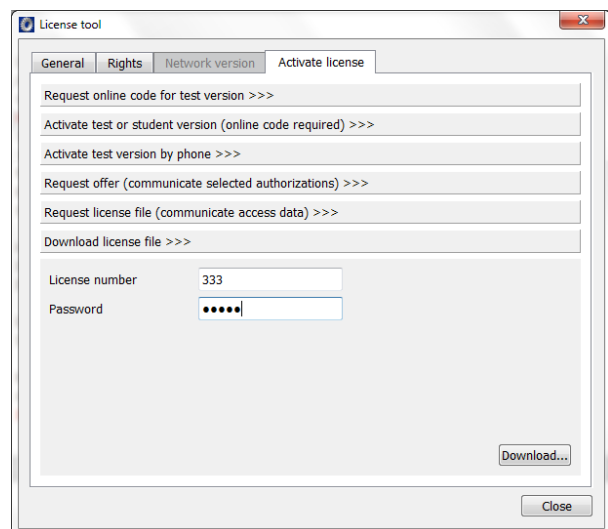
We recommend **not** to place the Access directory within the installation directory, since it is **independent from the KISSsoft version**. After the selection of the Access directory, the license tool will show the selected path and the corresponding **Hardware code**. Please go to **“Activate license”**, choose **“Request license file..”**, fill in all your information and click the **[Send...]** button. This will start your email client with the correct email address, and a text file attached that contains the necessary information. As an alternative you can also **[Save...]** the data manually into a text file and send this file to **info@KISSsoft.AG** .



### Step 3, Copying the License File into the Installation

We will supply a license file for you in your customer are on our web site. Furthermore we will send you a download password. In order to obtain the license file, proceed as follows:

- 1) With Windows Vista or Windows 7 start KISSsoft in **administrator mode**: click on the Windows start button, go to the short cut to KISSsoft and click with the right mouse button on the short cut. Choose “Run as administrator” in the pop up menu that opens, and confirm the subsequent security request of the User Account Control. With Windows XP start KISSsoft as usual.
- 2) When KISSsoft is open, start the license tool as described above.
- 3) On the tab “Activate License” click on “Download license file > >>”.



- 4) Enter your license number and the download password. Click on [Download...].  
If the download is successful the software will issue a respective message in combination with the question, whether you want to load the license file. Confirm with "Yes" and the procedure is finished. You can work with KISSsoft now.

Should an error occur during download, for instance due to an internet connection blocked by a firewall, you can also download the license file manually. Proceed with the next steps for this:

- 1) Open the web page **www.KISSsoft.ch**. On "**Service/Support**" take the link to the **customer area**. Enter your **license number** at the right side and click on **[Open]**.
- 2) A login dialog opens. Enter your **license number** as **user name**. Enter the **password** you received from us. You are now directed to a site containing a link to your license file (**license\_\_\_\_.lic**) If you don't know your password, please consult our hotline, **support@KISSsoft.AG** .
- 3) Save the license file in the subfolder **"/license"** within the KISSsoft installation directory.

## Hotline

Should any problems emerge, feel free to use our hotline (+41 55 254 20 55) or get in touch by Email (support@KISSsoft.AG). **Important:** please make a note of any error messages appearing during the installation to enable us to quickly identify the problem.