

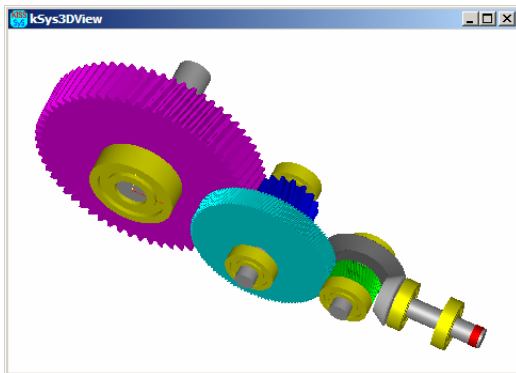
KISSsoft AG - ☎ +41 55 254 20 50
 Uetzikon 4 - ☎ +41 55 254 20 51
 8634 Hombrechtikon - ✉ info@KISSsoft.AG
 Switzerland - www.KISSsoft.AG

Gearbox Calculation Package GPK The Standard for Industry Gearboxes

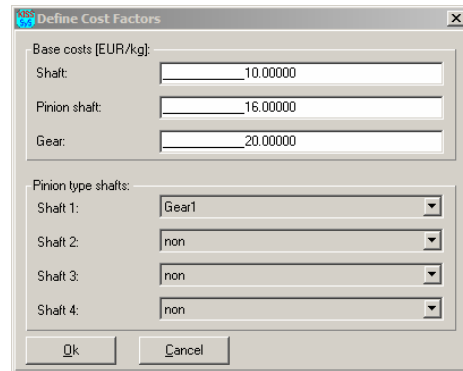
- Keep track of costs during manufacturing
- Recalculate a whole gearbox within minutes
- Quickly and accurately process inquiries for quotation
- Automatically document the calculation
- Export calculation tools into CAD
- Work as you usually do with KISSsoft

Cost-effective Manufacturing

Are you interested in your manufacturing costs? Even during the design phase? In GPK costs of the gearbox (without housing) are estimated simultaneously with the calculation. In GPK, you can also introduce your production data order to improve the accuracy of the estimated costs.



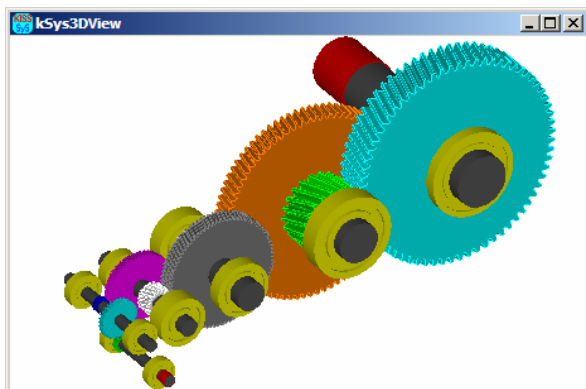
Bevel-spur-gear Gearbox with Cost Estimation



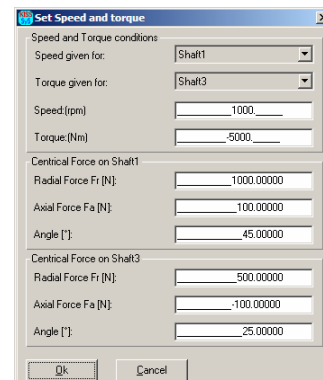
Cost Calculation Dialog

Verify a whole Gearbox within Minutes

Did you ever need to recalculate an existing gearbox for different loads or gearing data? How long did it take you? In GPK, with the existing gearbox examples, the recalculation with changed parameters will take a few minutes only: start KISSsys, load the gearbox file, change gearing/load data, start calculation, print documentation!



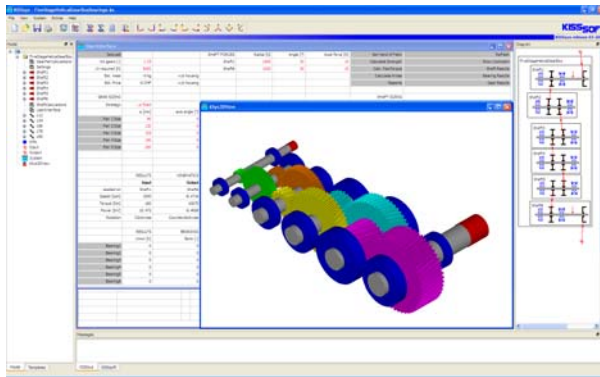
Five-stage Spur-gear Gearbox



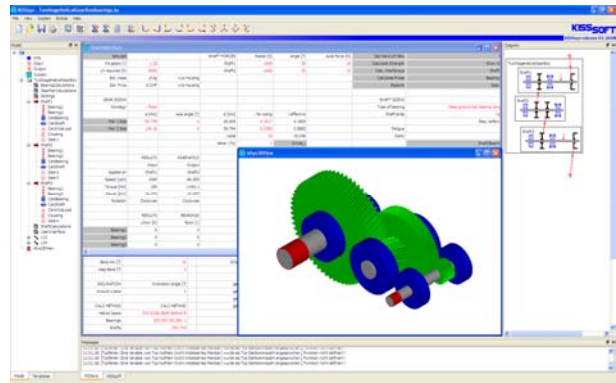
Data main Dialog

React quickly and accurately to Inquiries for Quotation

When you design a gearbox, what interests your customer most? Size, weight, cost, delivery date! And that is what the customer does want to know as fast as possible. In day-to-day business, your customers expect you to be able to supply them quickly with information on approximate size and weight of a gearbox. GPK lets you swiftly calculate a complete gearbox (without housing) with simultaneous estimation of weights and main dimensions.



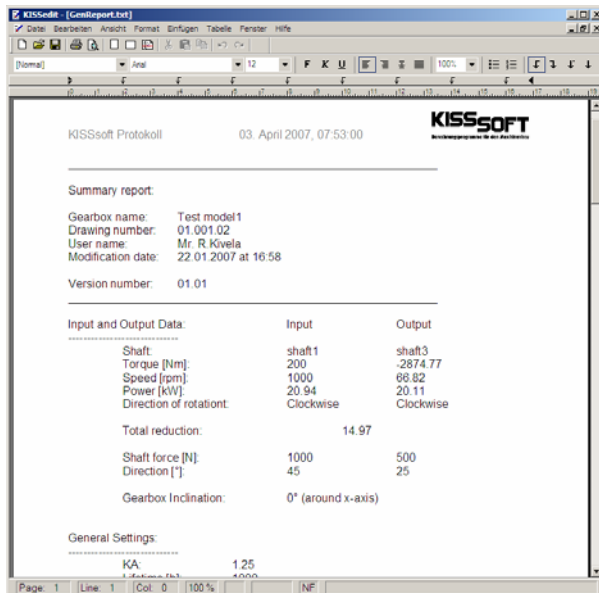
Five stage helical gearbox



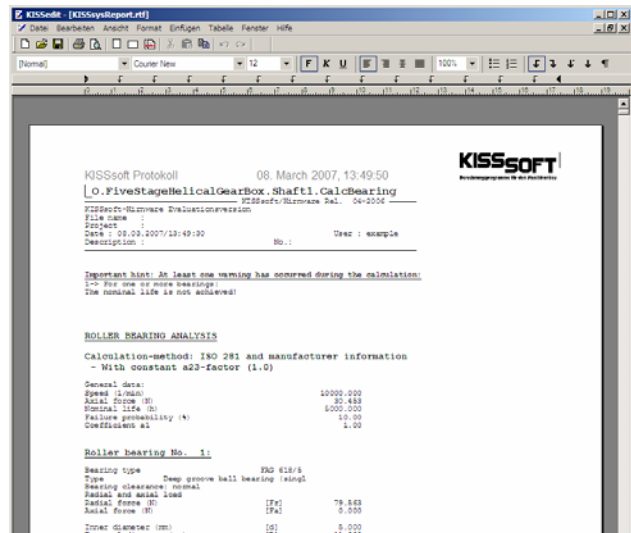
Two stage helical gearbox

Automatic Calculation Documentation

Do you enjoy writing calculation reports? KISSsys frees you from this boring chore; you may choose between a summary (e. g. for your customers, or as a cover page for the project file) and a complete report. The latter, documents in extenso all the calculations, making sure that you can document your work quickly, accurately and in a comprehensive way.



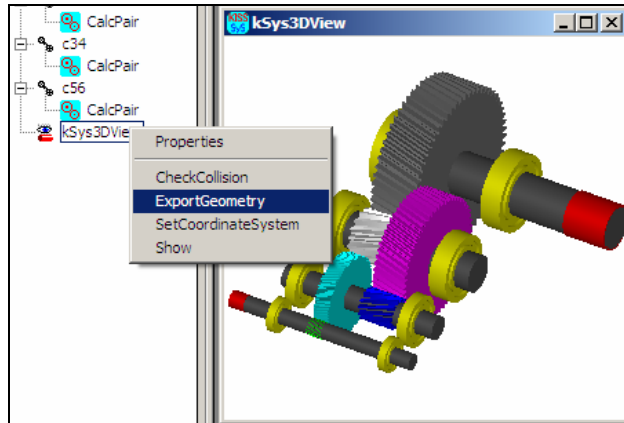
Summary report, about 2 Pages



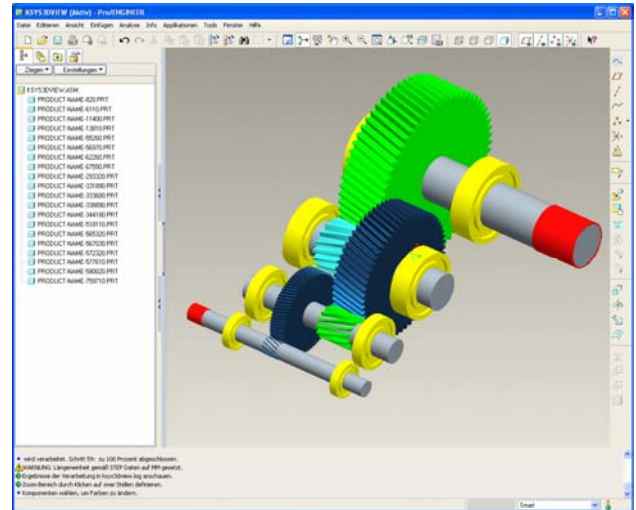
Complete report, up to 100 Pages

Direct Data Export into your CAD System

After designed out or verified a gearbox, export the 3D data as a step file and read it in your CAD System for packaging studies, collision checks or for visualisation.



KISSsys Model



Export into CAD

Configurations

Spur-gear Gearboxes:
- One to five Stages

(Two Bearings per Shaft, each)

Does your configuration differ from the standards above? No problem, we can specially adapt the GPK model for you.

Bevel-spur-gear Gearboxes:

- One Bevel-gear Stage
- One bevel plus one to three helical stages

(Two Bearings per Shaft, each)

Prerequisites

GPK uses KISSsoft for the calculation of gears, bearings and shafts. In order to use GPK, you need a KISSsoft licence for the correspondent module. Please do contact KISSsoft AG for advice.

Documentation

For further information: <http://www.kisssoft.ch/english/products/gpk.php>

Prices (non-binding)

Purchase price, Dongle License	€2 500,00
Purchase price, Floating License	€3 125,00
Maintenance and Support fee, per year, Dongle License	€375,00 p.a.
Maintenance and Support fee, per year, Floating License	€468.75 p.a.

When purchasing KISSsys, GPK is included. Customers having already one/more KISSsys License(s) will get GPK free of charge. Please note that both KISSsys and GPK require a KISSsoft License. The necessary extent of the KISSsoft License can vary; please contact us for advice without any obligation.

Demonstrations

We will be pleased to demonstrate our GPK to you without any obligation; you just need an Internet connection and a telephone **Call +41 55 254 20 50 and ask for a "GPK Demonstration"** and you will be attended by one of our Support Engineers.