

KISSsoft AG - ☎ +41 55 254 20 50
Uetzikon 4 - ☎ +41 55 254 20 51
8634 Hombrechtikon - ✉ info@KISSsoft.AG
Switzerland - www.KISSsoft.AG

KISSsys Instruction: Editing the User Interface

1 Introduction

The following guide describes how to copy sections and how to include rows and columns in user interfaces.

2 Solution

The possibilities of the user in the mode *Administrator* are as follows:

- Enter rows and columns in the “*UserInterface*” - table.
- Copying selected areas.
- Deleting selected areas.
- Deleting rows and columns.
- Adjust the width of the columns automatically.
- Adding information in the fields

All these orders can be given by a right click on the cells and the choice of desired operation from the list.

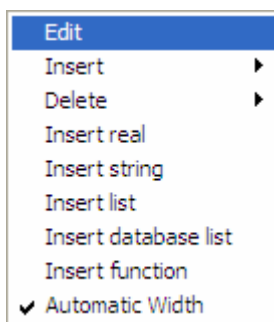


Figure 3.1-1 List of available operations

3 Description of the Manipulation

3.1 Selections

Holding down the left mouse button marks the cells with the use of the cursor. A right click on the selected area shows the orders *Delete Selection* and *Copy Selection*, which acts both on the complete selected area.



Figure 3.1-1 Example of the Selections Order

3.2 Function Insert

The selection of one cell and a right click on it gives the user the possibility to include several items with the order *Insert*:

- *Insert Selection* includes the copied selection which was made before (see above).
- *Insert Row* includes an empty row on the left of the selected cell.

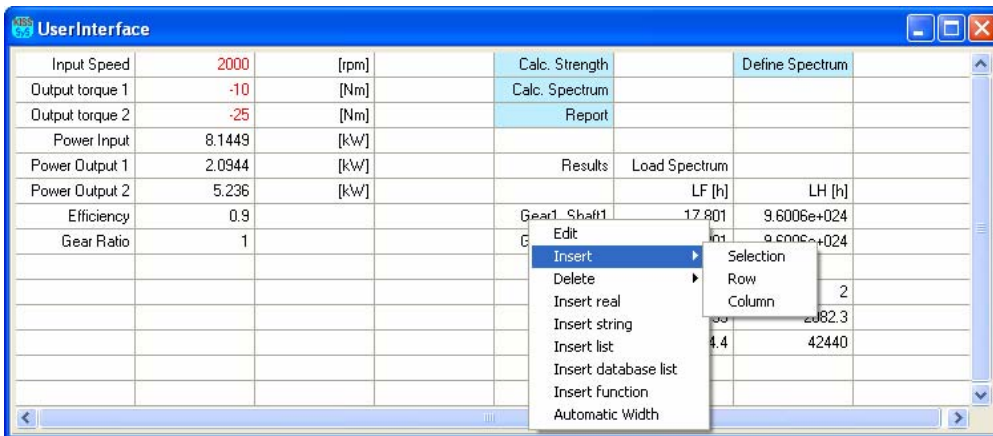


Figure 3.2-1 Insert Function

- *Insert Column* includes an empty column above the selected cell.

3.3 Function Delete

A right mouse click on a single cell shows also the different *Delete* functions:

- *Delete Contents* deletes the content of the cell.
- *Delete Row* deletes the row in which the selected cell is positioned.
- *Delete Column* deletes the column in which the selected cell is positioned.

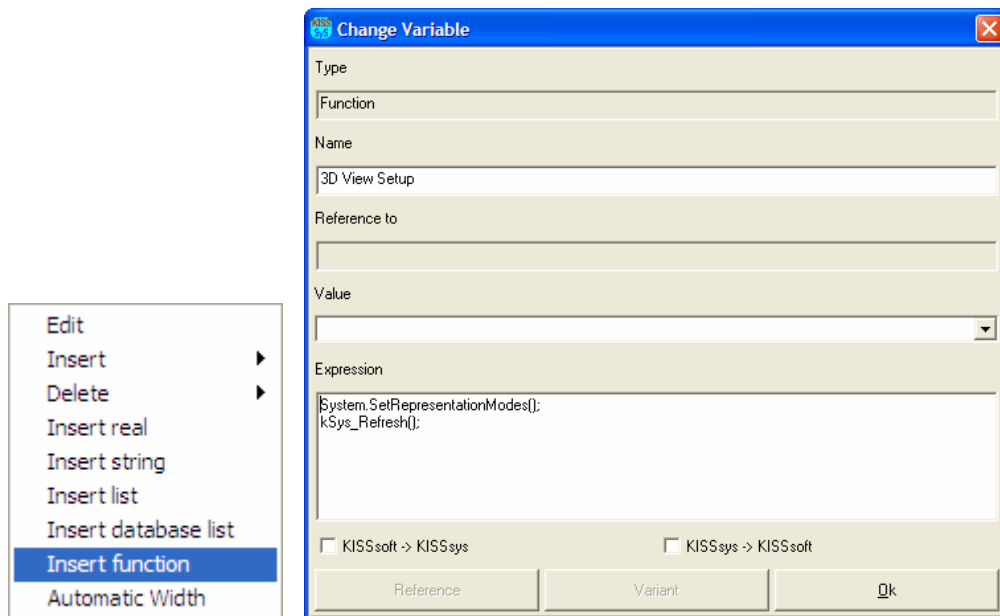


Figure 3.5-1 Insert function to table, and definition dialog

3.6 Adding a real value to the table

Select desired field and with right mouse click select from selection list “Insert real” and definition dialog will appear. Value or expression for real value can be then added.

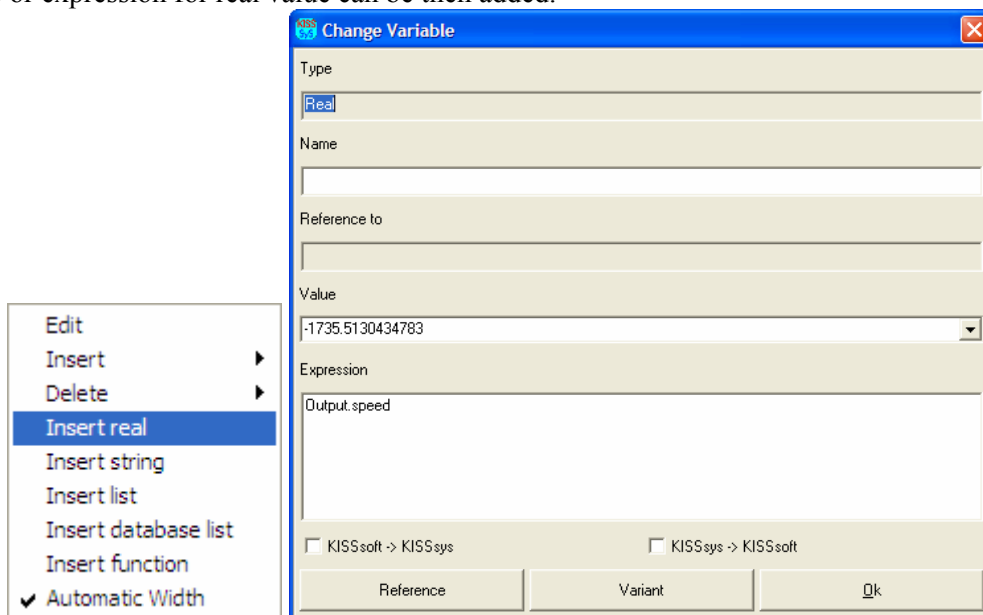


Figure 3.6-1 Insert real value to table, and definition dialog

Similarly any other values can be added in to tables.

3.7 Adding a editable reference field to the table

For example if you want to add editable real value to the table. Value itself is defined somewhere else and can be accessed an edited via table. Select desired field and with right mouse click select from selection list “Insert real” and definition dialog will appear. Press “Reference” button in bottom left hand corner of the dialog. Type in bath to the value in the field “Reference to” to make a link to the value. This must be in quotation marks. Now you can retype value in table and original value will be changed.

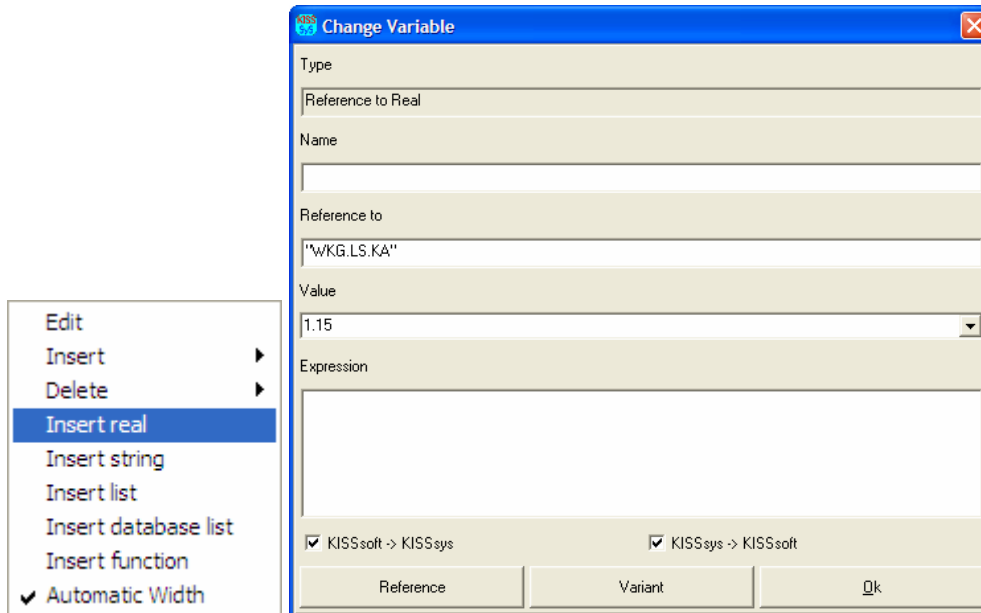


Figure 3.7-1 Insert reference value to table, and definition dialog

3.8 Editing field on table

Any defined field can be later edited by selecting “*Edit*” from the drop down list of the field.

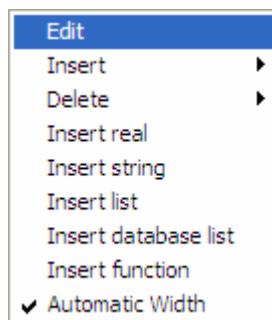


Figure 3.8-1 Edition of any defined field in the table