

KISSsoft AG - ☎ +41 55 254 20 50
Uetzikon 4 - 📠 +41 55 254 20 51
8634 Hombrechtikon - ✉ info@KISSsoft.AG
Switzerland - 🌐 www.KISSsoft.AG

KISSsys Instructions:

Adaptation of Table patterns

1 Introduction

Typical table patterns are saved in KISSsys Templates. When these tables are copied into the tree structure, they provide the most important information about certain elements. This instruction uses the table “*GearPairCalculations*” as an example how to change the default appearance of these tables. The “*GearPairCalculations*” - table shows for example the number of teeth, the rotation speed and the safety factors. The following guide describes how to add such a parameter to the table.

2 Solution

Which parameters are shown by the table are fixed in the definition of the table. The new parameter is now added to this definition. The extended table can then be saved under the Templates or it can replace the already existent table in the Templates.

3 Description of the Procedure

3.1 Changing the Definition of the Table

- The Table “*GearPairCalculation*” is copied from the templates to the tree structure. The table appears with a right mouse click on its icon in the tree structure and then selecting function “*Show*”.

	HS	IM
fileName		
P	1236.8	1244.3
T1	42649	1.4302e+005
T2	10493	42649
n1	276.92	83.077
n2	1118.8	276.92
mn1	7	10
beta1	13	14
alpha1	20	20
z1	101	90
z2	25	27
a	450	600
b1	165	245
b2	165	245
x1	-0.4424	-0.3906
x2	0.078753	0.10477
SF1	1.7186	1.4483
SF2	1.6228	1.3971
SH1	1.4688	1.4083
SH2	1.3931	1.3423
SSint	2.6699	2.7278
SB	1.5928	2.0312
RefProfile1	ISO 53.2 Profil A	ISO 53.2 Profil A
RefProfile2	ISO 53.2 Profil A	ISO 53.2 Profil A
material1	(>=28HRC core)	(>=28HRC core)
material2	(>=28HRC core)	(>=28HRC core)
Q1	6	6
Q2	6	6
TtTol1	DIN3967 cd25	DIN3967 cd25
TtTol2	DIN3967 cd25	DIN3967 cd25

Figure 3.1-1 Picture of the standard table (helical gears)

- A right click on “GearPairCalculations”, “Properties” and the choice of “definition” shows the definition of the table in the field “Expression”.

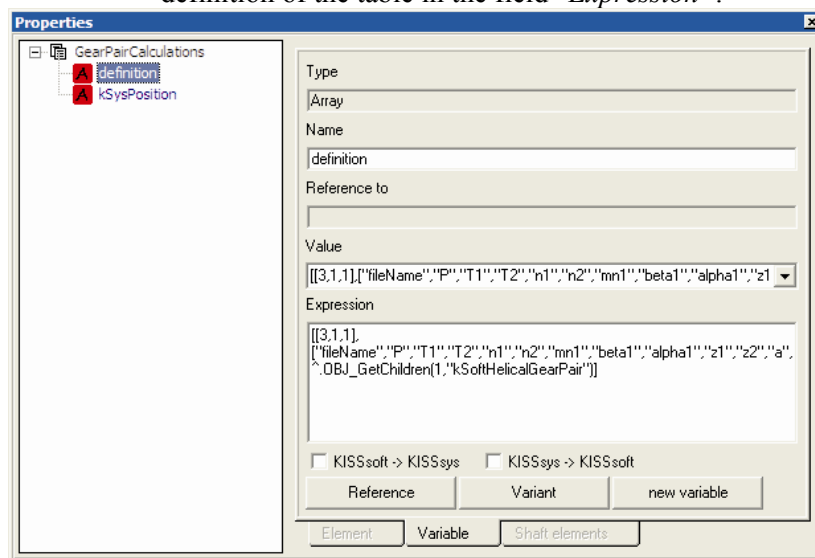


Figure 3.1-2 Definition of the table

- The definition may now be extended by the chosen variable. The diameter of the tip circle for the two wheels should be shown in the table. These variables are saved as “da1” and “da2” of the type “Real” (KISSsys Instructions “ins-002-02-Variable-names” is an overview for the names and the purposes of the variables).
- The expression is now extended by the variable “da1” and “da2”:

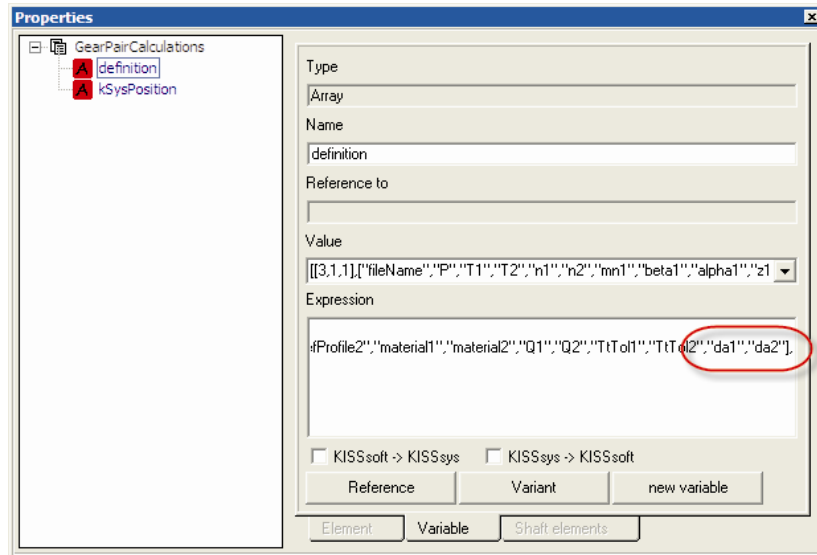


Figure 3.1-3 Adding variables in the table

3.2 Display the Table Again

- New variables become visible in the table when it will be shown again.
- The table is updated with a right mouse click on its icon in the tree structure and then selecting function “Show”.
- The bottom of the table displays now the two tip diameters.

SF1	1.7186	1.4483
SF2	1.6228	1.3971
SH1	1.4688	1.4083
SH2	1.3931	1.3423
SSint	2.6699	2.7278
SB	1.5928	2.0312
RefProfile1	ISO 53.2 Profil A	ISO 53.2 Profil A
RefProfile2	ISO 53.2 Profil A	ISO 53.2 Profil A
material1	(>=28HRC core)	(>=28HRC core)
material2	(>=28HRC core)	(>=28HRC core)
Q1	6	6
Q2	6	6
TtTol1	DIN3967 cd25	DIN3967 cd25
TtTol2	DIN3967 cd25	DIN3967 cd25
da1	733.29	939.64
da2	194.6	300.26

Figure 3.2-1 New variables added in the table

3.3 Saving of the Modified Templates

- The easiest way is to copy the table in the templates and to rename it. For that purpose right click on the table “GearPairCalculations”, “copy” and “paste” it under “Tables” in the templates.
- Introduce a new name:

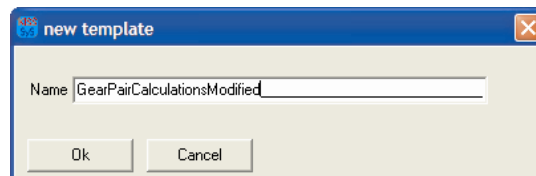


Figure 3.3-1 Saving modified table in the templates

- The list of the templates is then extended by the user defined table:

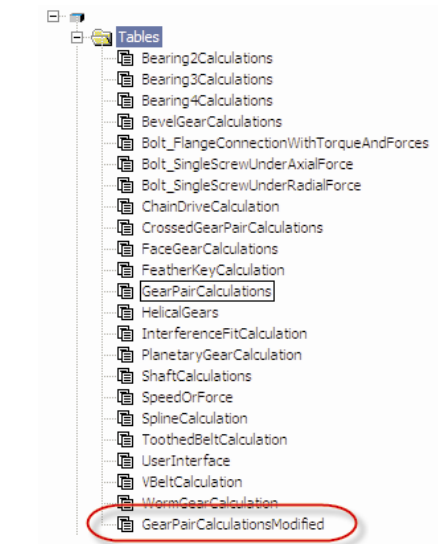


Figure 3.3-2 New table added to the templates

- The new table can now be modified as described above.
- As an alternative the already changed table can be copied from the tree structure to the templates.
- Save templates as e.g. “*templates_user1*”

3.4 Work with the Templates

- Start KISSsys under “File”, “Open template file” opens the browser and it is possible to choose the desired templates file.
- User is also able to select any existing KISSsys model as a template file.

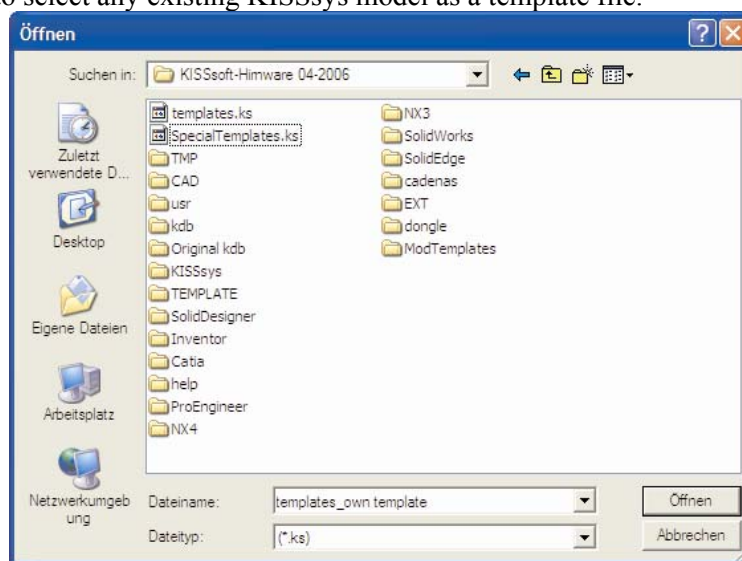


Figure 3.4-1 Choose template file

4 Summary

Predefined tables as described in the templates can be changed by the user. If the changed tables are used later on, it is possible to copy them back into the templates. As an alternative it is possible to change the table in the templates. Every user can therefore change his templates himself to his personal likes and needs. Like tables also any other template elements can be modified to meet e.g. custom settings.